

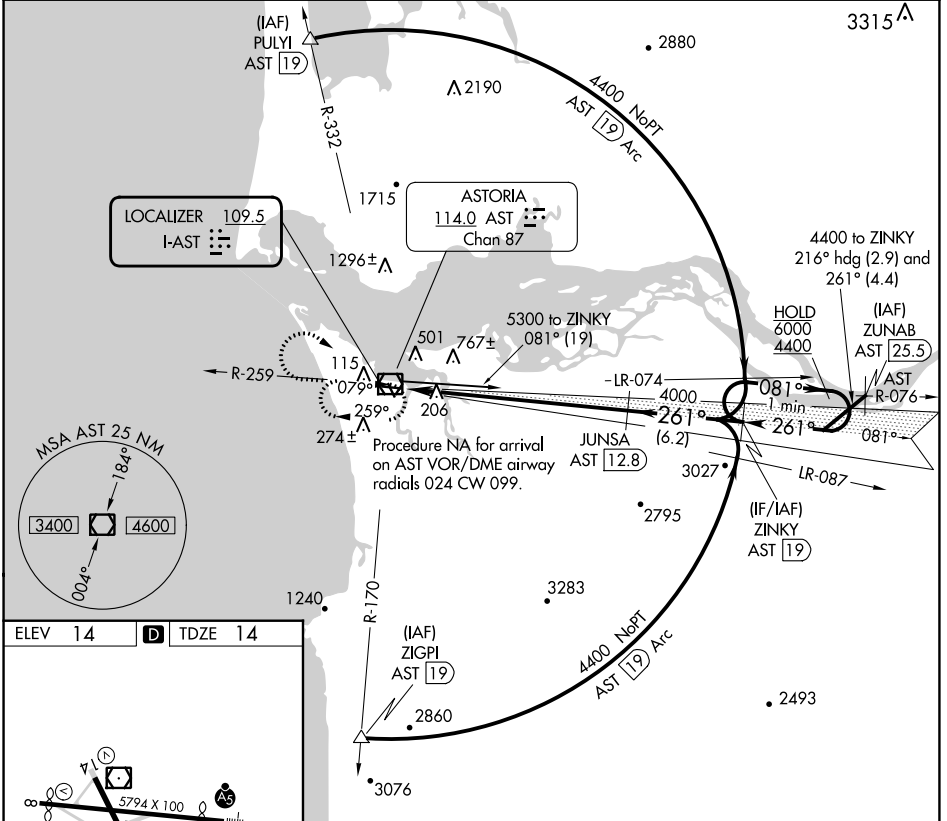
LOC I-AST 109.5	APP CRS 261°	Rwy Idg TDZE Apt Elev	4780 14 14
---------------------------	------------------------	-----------------------------	---------------------------------------

ILS RWY 26

ASTORIA RGNL (AST)

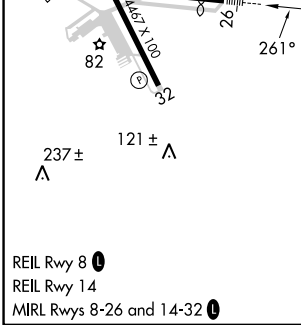
DME required for procedure entry.		MALSR 	MISSED APPROACH: Climb to 1500 then climbing right turn to 2900 direct AST VOR/DME and hold.
Rwy 26 helicopter visibility reduction below 3/4 SM NA. Inoperative table does not apply.			

ASOS 135.375	SEATTLE CENTER 124.2 317.6	UNICOM 122.8 (CTAF) 0
------------------------	--------------------------------------	---------------------------------



NW-1, 16 MAY 2024 to 13 JUN 2024

NW-1, 16 MAY 2024 to 13 JUN 2024



ELEV 14	D	TDZE 14		
1500	2900	AST	JUNSA AST [12.8]	ZINKY AST [19]
			4000	One Minute Holding Pattern
			4000	081° → 6000 ← 261° 4400
			12.3 NM	6.2 NM
GS 3.00°				TCH 56
CATEGORY	A	B	C	D
S-ILS 26		264-1	250 (300-1)	