


APP CRS	Rwy Idg	8994
123°	TDZE	4443
	Apt Elev	4473

RNAV (RNP) Z RWY 12

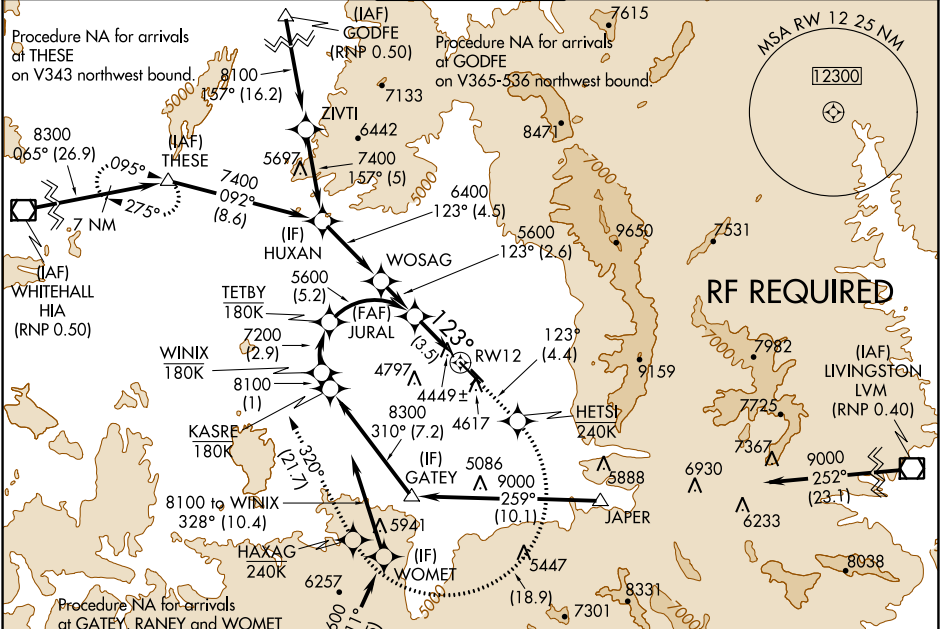
BOZEMAN YELLOWSTONE INTL (BZN)

GPS required. For uncompensated Baro-VNAV systems, procedure NA below -23°C (-11°F) or above 49°C (121°F). When VGSi inop, procedure NA at night. For inoperative MALSR increase RNP 0.30 visibility to 1½ all Cats.

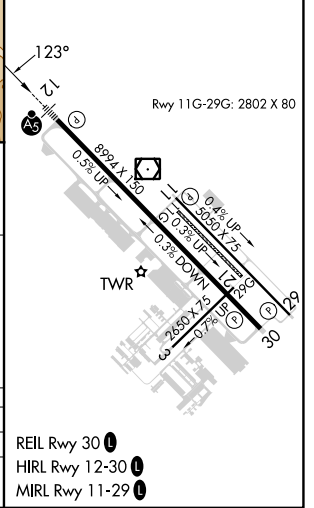
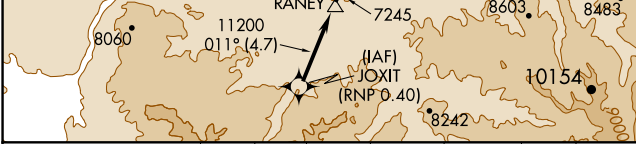
MALSR 

MISSED APPROACH: Climb to 8300 on track 123° to HETSI, and right turn to HAXAG, and on track 320° to THESE and hold.

ATIS 135.425	BIG SKY APP CON ★ 118.975 226.675	BOZEMAN TOWER ★ 118.2 (CTAF)	GND CON 121.8	UNICOM 122.95
------------------------	---	--	-------------------------	-------------------------



ELEV 4473	D	TDZE 4443
-----------	----------	-----------



JURAL	8300	HETSI	HAXAG	THESE
	↑	tr 123°	tr 320°	△
See planview for multiple IF locations.				
5600				
				RW12
GP 3.00°				
TCH 53				
	A	B	C	D
RNP 0.30 DA	4791-1		348(400-1)	

AUTHORIZATION REQUIRED

- REIL Rwy 30 
- HIRL Rwy 12-30 
- MIRL Rwy 11-29 

NW-1, 16 MAY 2024 to 13 JUN 2024

NW-1, 16 MAY 2024 to 13 JUN 2024