

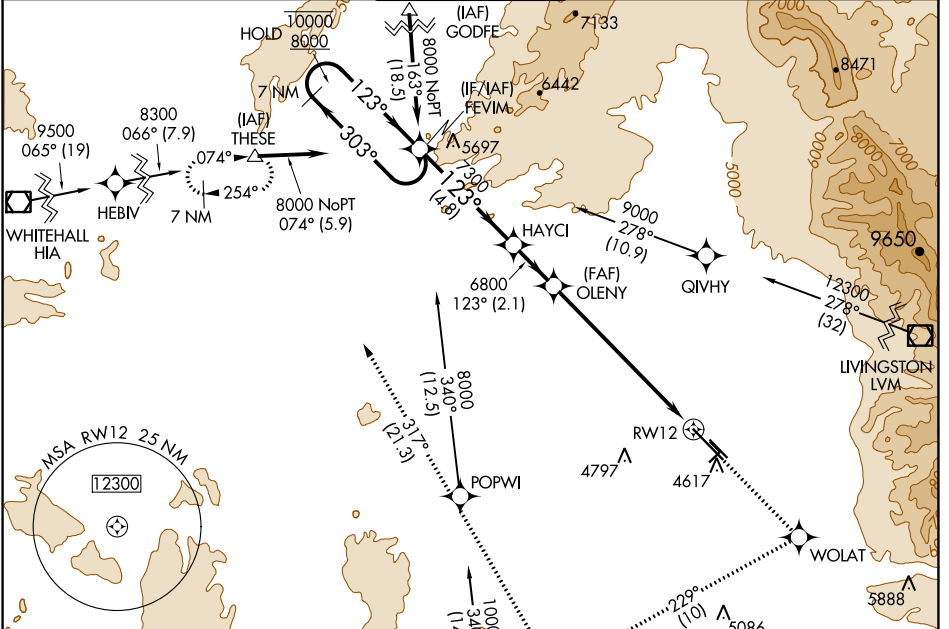
WAAS CH <b>72816</b> <b>W12A</b>	APP CRS <b>123°</b>	Rwy Idg TDZE Apt Elev	<b>8994</b> <b>4443</b> <b>4473</b>
--	------------------------	-----------------------------	---

# RNAV (GPS) Y RWY 12

BOZEMAN YELLOWSTONE INTL (BZN)

RNP APCH.	MALSR	MISSED APPROACH: Climb to 8300 direct WOLAT and right turn on track 229° to CISED and on track 317° to THESE and hold.
<p>⚠ Circling NA to Rwys 3-21 and 11-29. For uncompensated Baro-VNAV systems, procedure NA below -23°C or above 49°C. For inop ALS, increase</p> <p>⚠ -31°C LNAV/VNAV visibility to 1½ SM and LNAV visibility Cats C and D to 1½ SM.</p>		

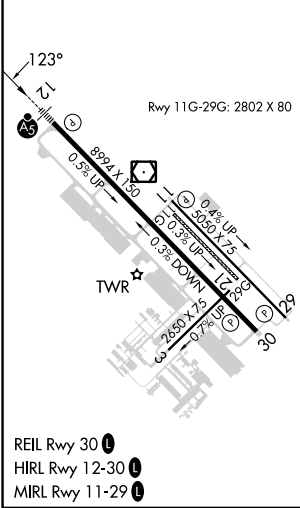
ATIS <b>135.425</b>	BIG SKY APP CON* <b>118.975 226.675</b>	BOZEMAN TOWER* <b>118.2 (CTAF) 0</b>	GND CON <b>121.8</b>	UNICOM <b>122.95</b>
------------------------	--	---	-------------------------	-------------------------



NW-1, 16 MAY 2024 to 13 JUN 2024

NW-1, 16 MAY 2024 to 13 JUN 2024

ELEV 4473	<b>D</b>	TDZE 4443
-----------	----------	-----------



	FEVIM	8300	WOLAT	CISED	THESE
7 NM Holding Pattern		↑	◆	tr 229°	◆ tr 317°
10000 ← 303°	HAYCI				* LNAV only
8000 → 123°	OLENY	6800			*1.5 NM to RWY 12
GP 3.00°		7300			
TCH 53		6800			
	4.8 NM	2.1 NM	5.7 NM	1.5 NM	
CATEGORY	A	B	C	D	
LPV DA		4693-½	250 (300-½)		
LNAV/VNAV DA		5094-1¾	651 (700-1¾)		
LNAV MDA	4960-½	517 (500-½)	4960-1	4960-1½	517 (500-1½)
<b>C</b> CIRCLING	4960-1	487 (500-1)	5160-2	5360-3	887 (900-3)