

(TEERX4.TEERX) 23054

# TEERX FOUR DEPARTURE (RNAV)

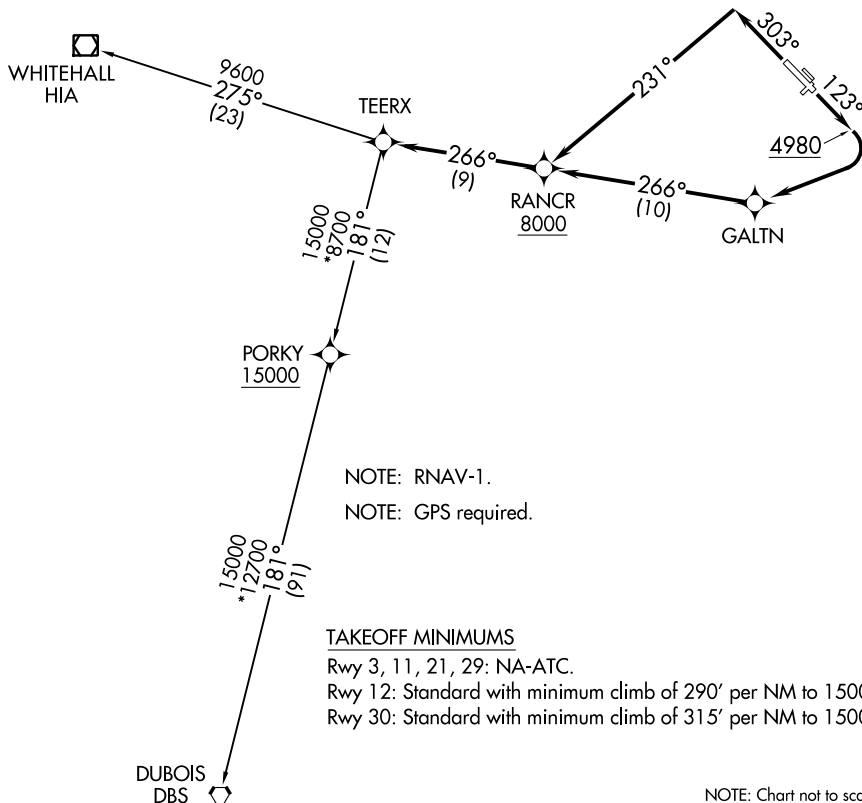
BOZEMAN YELLOWSTONE INTL (BZN)

AL-59 (FAA)

BOZEMAN, MONTANA

BIG SKY DEP CON ★  
118.975 226.675  
ATIS  
135.425  
GND CON  
121.8  
BOZEMAN TOWER ★  
118.2 (CTAF)

**TOP ALTITUDE:  
16000**



NOTE: RNAV-1.  
NOTE: GPS required.

### TAKEOFF MINIMUMS

Rwy 3, 11, 21, 29: NA-ATC.

Rwy 12: Standard with minimum climb of 290' per NM to 15000.

Rwy 30: Standard with minimum climb of 315' per NM to 15000.

NOTE: Chart not to scale.



### DEPARTURE ROUTE DESCRIPTION

TAKEOFF RUNWAY 12: Climb heading 123° to 4980, then climbing right turn direct GALTN, then on track 266° to cross RANCR at or above 8000, then on track 266° to TEERX, thence. . . .

TAKEOFF RUNWAY 30: Climb heading 303° to intercept course 231° to cross RANCR at or above 8000, then on track 266° to TEERX, thence. . . .

. . . .(transition). Maintain 16000, expect filed altitude 10 minutes after departure.

DUBOIS TRANSITION (TEERX4.DBS)

WHITEHALL TRANSITION (TEERX4.HIA)

# TEERX FOUR DEPARTURE (RNAV)

(TEERX4.TEERX) 24MAY18

BOZEMAN, MONTANA  
BOZEMAN YELLOWSTONE INTL (BZN)

NW-1, 16 MAY 2024 to 13 JUN 2024

NW-1, 16 MAY 2024 to 13 JUN 2024