

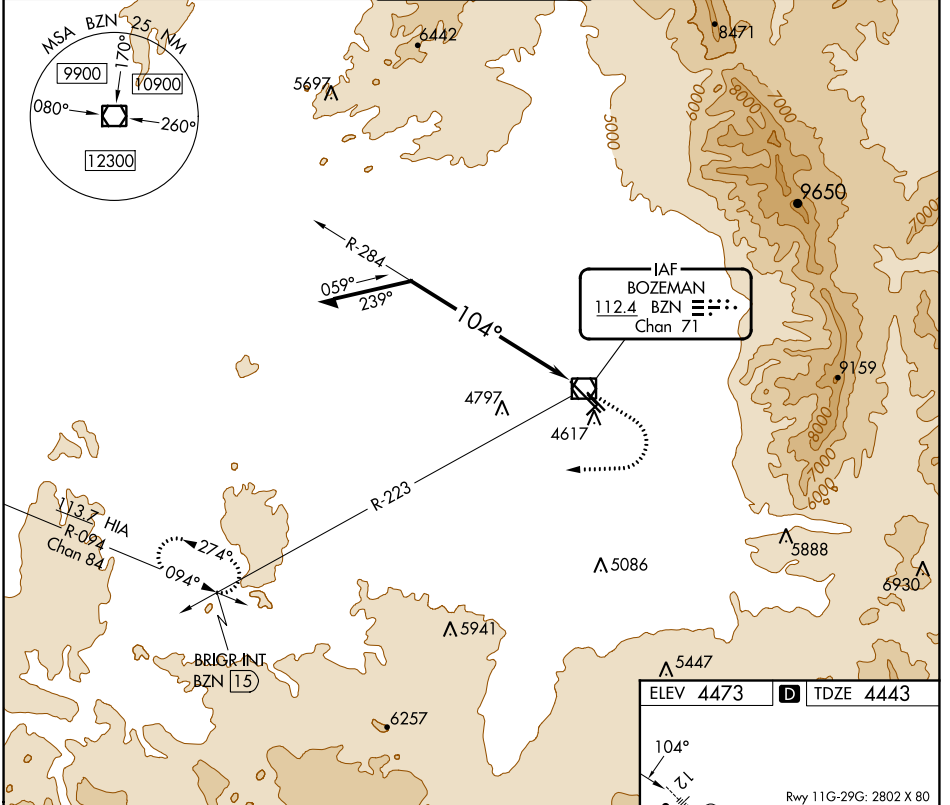
| | | |
|--|------------------------|---|
| VOR/DME BZN 112.4 Chan 71 | APP CRS 104° | Rwy ldg TDZE 4443 Apt Elev 4473 |
|--|------------------------|---|

VOR RWY 12

BOZEMAN YELLOWSTONE INTL (BZN)

| | | | |
|--|---|--|---|
| | Circling NA to Rwys 3-21 and 11-29. Inop table does not apply. | | MISSED APPROACH: Climb to 5500 then climbing right turn to 8000 on heading 250° and BZN VOR/DME R-223 to BRIGR INT/15 DME and hold. |
|--|---|--|---|

| | | | | |
|------------------------|--|---|-------------------------|-------------------------|
| ATIS 135.425 | BIG SKY APP CON* 118.975 226.675 | BOZEMAN TOWER* 118.2 (CTAF) 0 | GND CON 121.8 | UNICOM 122.95 |
|------------------------|--|---|-------------------------|-------------------------|



Remain within 10 NM

BZN VOR/DME

5500 8000

hdg 250°

BZN R-223 BRIGR INT

10000 8000

BZN 3.5

6700 284° 104°

3 NM

| CATEGORY | A | B | C | D |
|----------|--------------------------|--------------------------|--------|--------------|
| S-12 | 5440-1¼ 997 (1000-1¼) | 5440-1½ 997 (1000-1½) | 5440-3 | 997 (1000-3) |
| CIRCLING | 5440-1¼ 967 (1000-1¼) | 5440-1½ 967 (1000-1½) | 5440-3 | 967 (1000-3) |

ELEV 4473 TDZE 4443

Rwy 11G-29G: 2802 X 80

TWR

REIL Rwy 30 0

HIRL Rwy 12-30 1

MIRL Rwy 11-29 0

NW-1, 16 MAY 2024 to 13 JUN 2024

NW-1, 16 MAY 2024 to 13 JUN 2024