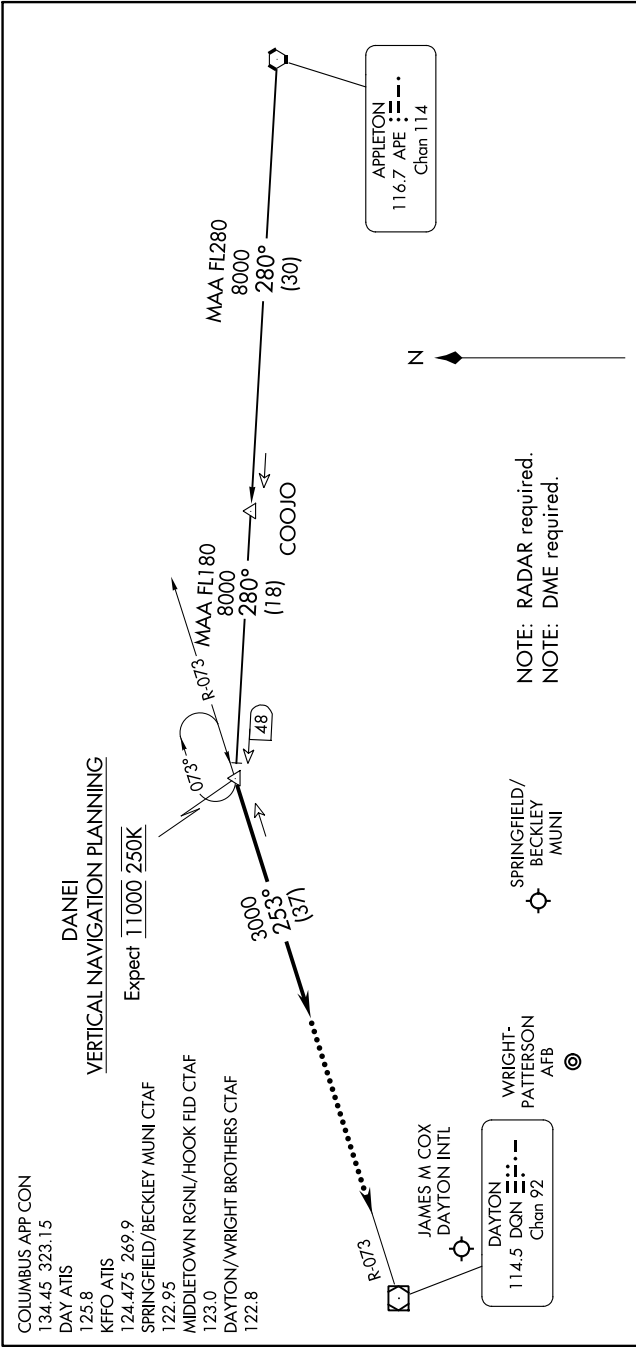


EC-2, 16 MAY 2024 to 13 JUN 2024



APPLETON TRANSITION (APE.DANEI3): From over APE VORTAC on APE R-280 to DANEI. Thence....

....From over DANEI on heading 253°. Expect RADAR vectors to final approach course.

LOST COMMUNICATIONS:
In the event of lost communications: At DANEI, proceed direct DQN VOR/DME maintain 3000' until DQN VOR/DME.

EC-2, 16 MAY 2024 to 13 JUN 2024

NOTE: Chart not to scale.