

DAYTON, OHIO

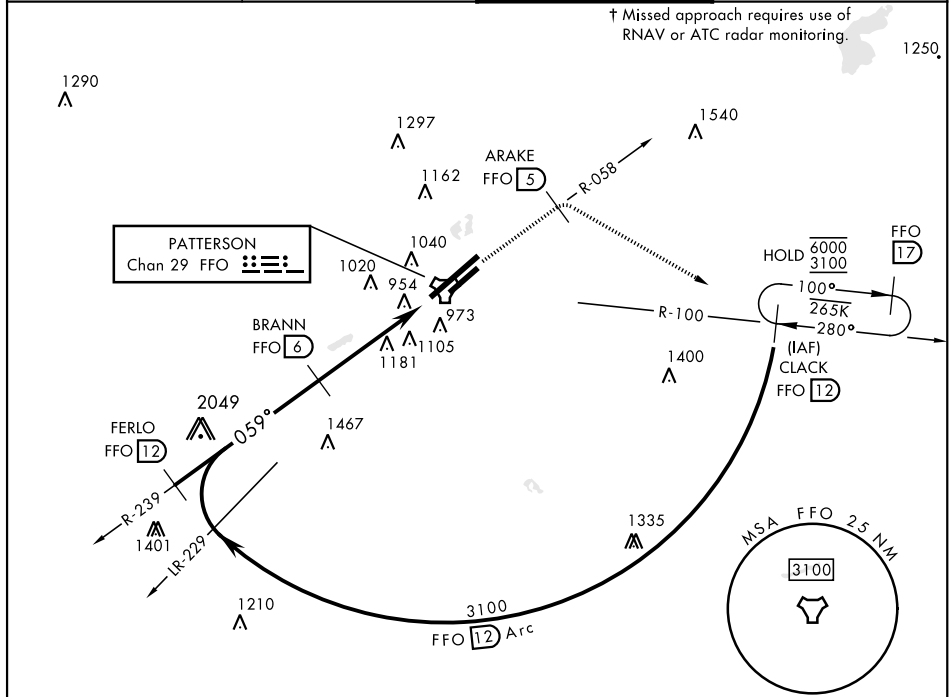
TACAN RWY 5L

TACAN FFO Chan 29	APCH CRS 059°	Rwy Ldg TDZE 803 Arprt Elev 823	AL-108 [USAF]	WRIGHT-PATTERSON AFB (KFFO)
-----------------------------	-------------------------	--	---------------	-----------------------------

▼ * When ALS inop, increase RVR CAT AB to 55 and vis to 1 mile, CAT CDE vis to 1¾ miles.
 ** When Rwy 23R VGSI inop, circling to Rwy 23R NA at night.

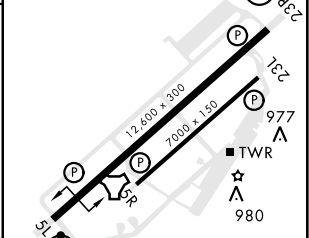
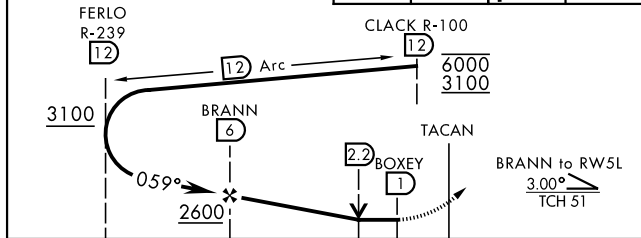
ALSF-1
 † MISSED APPROACH: Climb to 2000 via FFO R-058 to 5 DME, turn right direct CLACK climbing to 3100 and hold.

ATIS 124.475 269.9	COLUMBUS APP CON 118.85 269.275	PATTERSON TOWER 126.9 281.45	GND CON 121.8 335.8
------------------------------	---	--	-------------------------------



EMERG SAFE ALT 100 NM 3700

2000 FFO R-058	ARAKE FFO 5	3100 CLACK FFO 12	ELEV 823	TDZE 803
----------------	-------------	-------------------	----------	----------



CATEGORY	A	B	C	D	E
S-5L *	1400/24	597 (600-½)	1400-1¼	597 (600-1¼)	
CIRCLING **	1400-1 577 (600-1)	1440-1 617 (700-1)	1560-2 737 (800-2)	1620-2½ 797 (800-2½)	1620-2¾ 797 (800-2¾)

HIRL Rwy 5L-23R
 MIRL Rwy 5R-23L

DAYTON, OHIO 39° 50'N-84° 03'W WRIGHT-PATTERSON AFB (KFFO)
 Amdt 7 05JAN17

TACAN RWY 5L

EC-2, 16 MAY 2024 to 13 JUN 2024

EC-2, 16 MAY 2024 to 13 JUN 2024