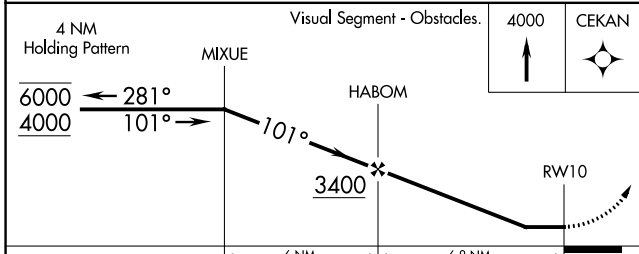
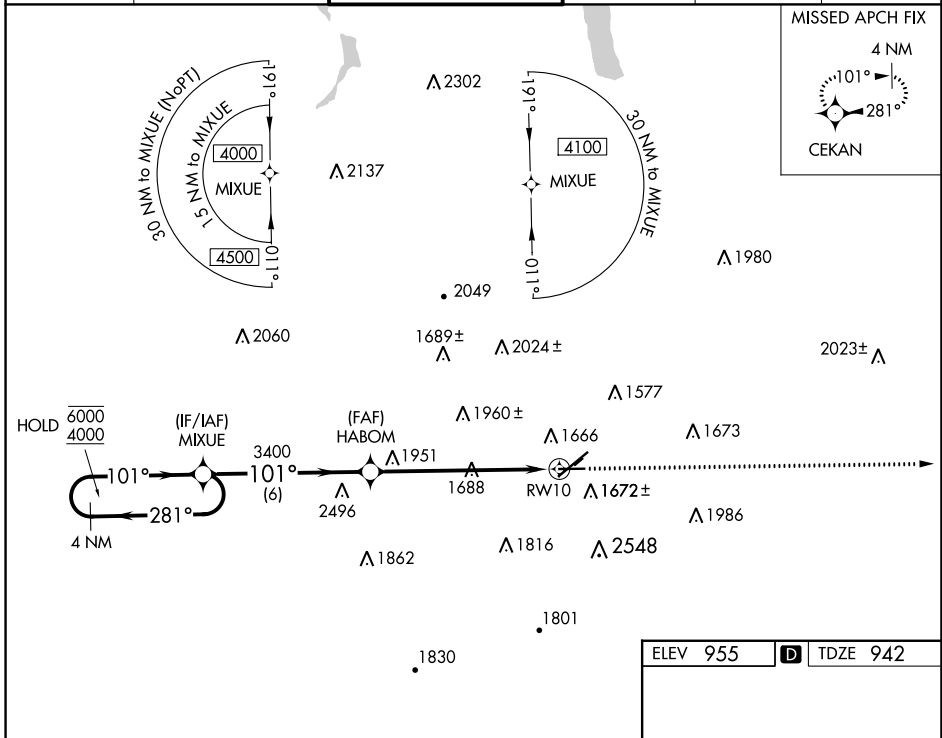


WAAS CH <b>70530</b> <b>W10A</b>	APP CRS <b>101°</b>	Rwy Idg TDZE Apt Elev	<b>5004</b> <b>942</b> <b>955</b>
--	------------------------	-----------------------------	---

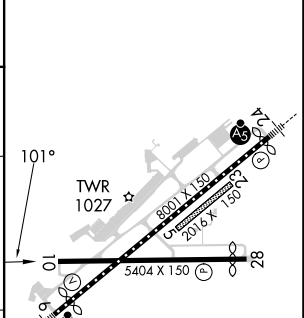
# RNAV (GPS) RWY 10

ELMIRA/CORNING RGNL (ELM)

RNP APCH.		<p>⚠ Circling NA to Rwys 5 and 23. Procedure NA at night. Rwy 10 helicopter visibility reduction below 1 SM NA. Circling NA for Cat D south of Rwys 10 and 28.</p>		<p>MISSED APPROACH: Climb to 4000 direct CEKAN and hold.</p>	
ATIS <b>125.475</b>	ELMIRA APP CON ★ <b>128.425 257.8</b>	ELMIRA TOWER ★ <b>121.1</b> (CTAF) <b>0 257.8</b>	GND CON <b>121.9</b>	CLNC DEL <b>121.9</b>	UNICOM <b>122.95</b>



ELEV 955	<b>D</b> TDZE 942
----------	-------------------



CATEGORY	A	B	C	D
LP MDA	2280-1½ 1338 (1400-1¼)	2280-1½ 1338 (1400-1½)	2280-3	1338 (1400-3)
LNAV MDA	2280-1¼ 1338 (1400-1¼)	2280-1½ 1338 (1400-1½)	2280-3	1338 (1400-3)
<b>C</b> CIRCLING	2280-1¼ 1325 (1400-1¼)	2280-1½ 1325 (1400-1½)	2280-3 1325 (1400-3)	2340-3 1385 (1400-3)

HIRL Rwy 6-24 **0**  
MIRL Rwy 10-28 **0**  
REIL Rws 6 and 24

NE-2, 16 MAY 2024 to 13 JUN 2024

NE-2, 16 MAY 2024 to 13 JUN 2024