

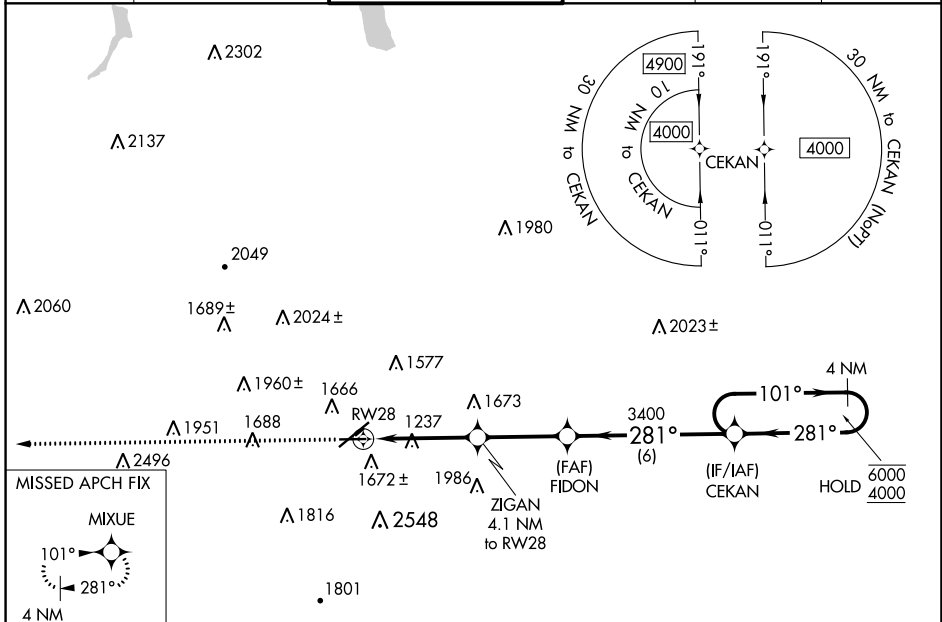
WAAS CH <b>77730</b> <b>W28A</b>	APP CRS <b>281°</b>	Rwy Idg TDZE Apt Elev	<b>5002</b> <b>944</b> <b>955</b>
--	------------------------	-----------------------------	---

# RNAV (GPS) RWY 28

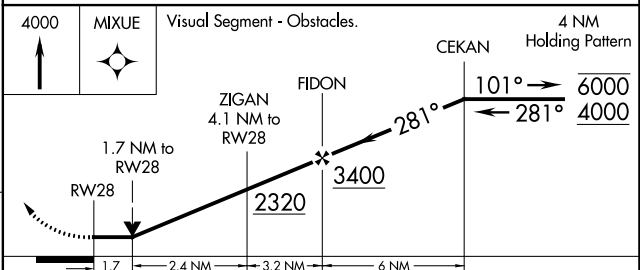
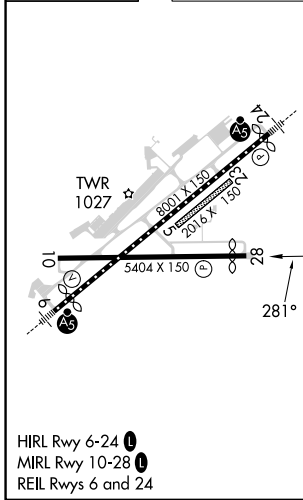
ELMIRA/CORNING RGNL (ELM)

RNP APCH.		<p>⚠ Circling NA for Cat D south of Rwy 10 and 28.                  Rwy 28 helicopter visibility reduction below 3/4 SM NA.                  ⚠ Circling Rwy 10 NA at night. Circling NA to Rwys 5 and 23.</p>		<p>MISSED APPROACH:                  Climb to 4000 direct                  MIXUE and hold.</p>	
-----------	--	---	--	--	--

ATIS <b>125.475</b>	ELMIRA APP CON * <b>128.425 257.8</b>	ELMIRA TOWER * <b>121.1 (CTAF) 257.8</b>	GND CON <b>121.9</b>	CLNC DEL <b>121.9</b>	UNICOM <b>122.95</b>
------------------------	--	---	-------------------------	--------------------------	-------------------------



ELEV 955	<b>D</b>	TDZE 944
----------	----------	----------



CATEGORY		A	B	C	D
LP	MDA	1540-1	596 (600-1)	1540-1 3/4	596 (600-1 3/4)
LNAV	MDA	1960-1 1/4 1016 (1100-1 1/4)	1960-1 1/2 1016 (1100-1 1/2)	1960-3	1016 (1100-3)
<b>C</b>	CIRCLING	2020-1 1/4 1065 (1100-1 1/4)	2080-1 1/2 1125 (1200-1 1/2)	2100-3 1145 (1200-3)	2340-3 1385 (1400-3)

NE-2, 16 MAY 2024 to 13 JUN 2024

NE-2, 16 MAY 2024 to 13 JUN 2024