


WAAS CH <b>42827</b> <b>W06A</b>	APP CRS <b>062°</b>	Rwy Idg TDZE Apt Elev	<b>7401</b> <b>944</b> <b>955</b>
--	------------------------	-----------------------------	---

# RNAV (GPS) RWY 6

ELMIRA/CORNING RGNL (ELM)

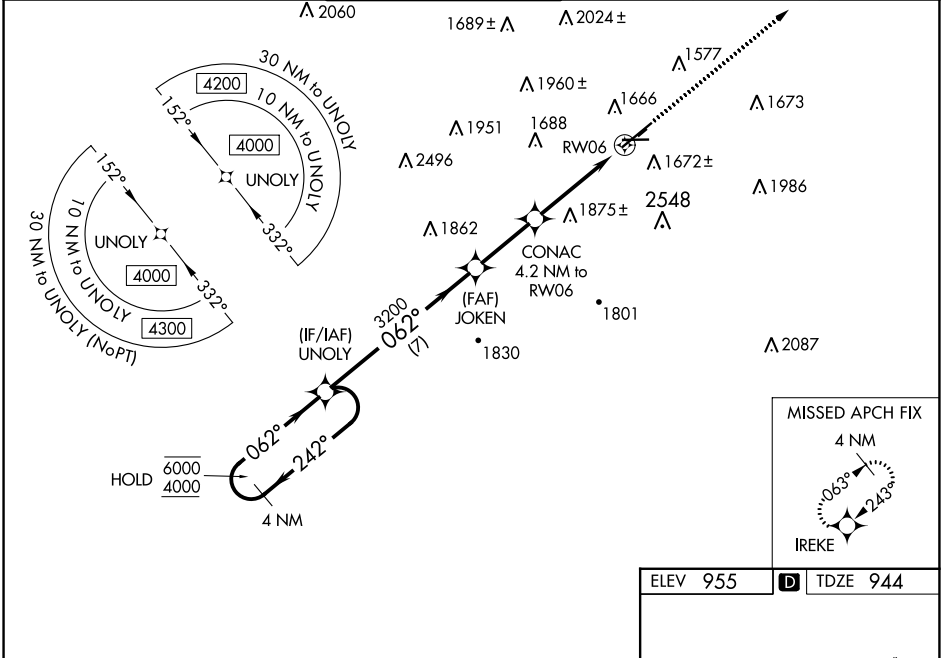
RNP APCH.

**⚠** Inop table does not apply to LNAV/VNAV all Cats. Circling Rwy 10 NA at night.  
**⚠** Circling NA to Rws 5 and 23. Circling NA for Cat D south of Rws 10 and 28.  
**⚠** For uncompensated Baro-VNAV systems, LNAV/VNAV NA below -21°C or above 54°C.  
**#** RVR 1800 authorized with use of FD or AP or HUD to DA.

MALSRL 

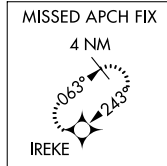
MISSED APPROACH: Climb to 4000 direct IREKE and hold.

ATIS <b>125.475</b>	ELMIRA APP CON * <b>128.425 257.8</b>	ELMIRA TOWER * <b>121.1 (CTAF) 0 257.8</b>	GND CON <b>121.9</b>	CLNC DEL <b>121.9</b>	UNICOM <b>122.95</b>
------------------------	--	---	-------------------------	--------------------------	-------------------------

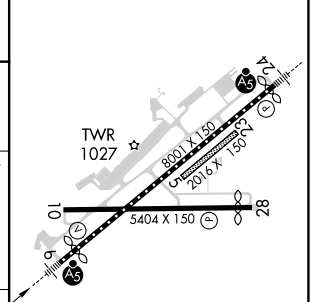
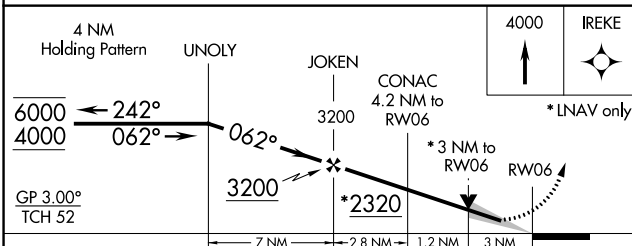


NE-2, 16 MAY 2024 to 13 JUN 2024

NE-2, 16 MAY 2024 to 13 JUN 2024



ELEV 955	<b>D</b> TDZE 944
----------	-------------------



CATEGORY	A	B	C	D
LPV DA#		1144/24	200 (200-1/2)	
LNAV/VNAV DA		2138-5	1194 (1200-5)	
LNAV MDA	1940/40 996 (1000-3/4)	1940/55 996 (1000-1)	1940-2 1/2	996 (1000-2 1/2)
<b>C</b> CIRCLING	2020-1 1/4 1065 (1100-1 1/4)	2080-1 1/2 1125 (1200-1 1/2)	2100-3 1145 (1200-3)	2340-3 1385 (1400-3)

HIRL Rwy 6-24 **Ⓛ**  
 MIRL Rwy 10-28 **Ⓛ**  
 REIL Rws 6 and 24