

FORT MOORE, GEORGIA

ILS or LOC RWY 33

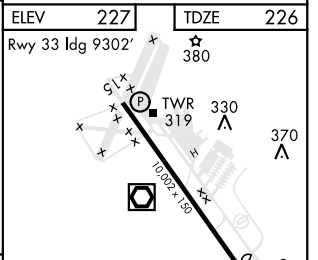
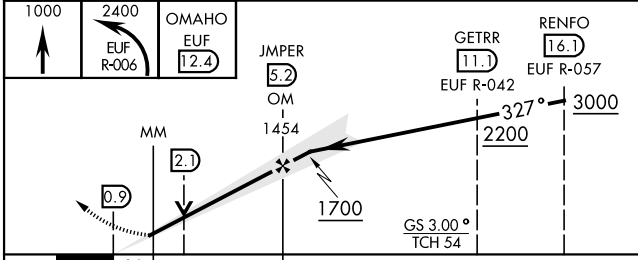
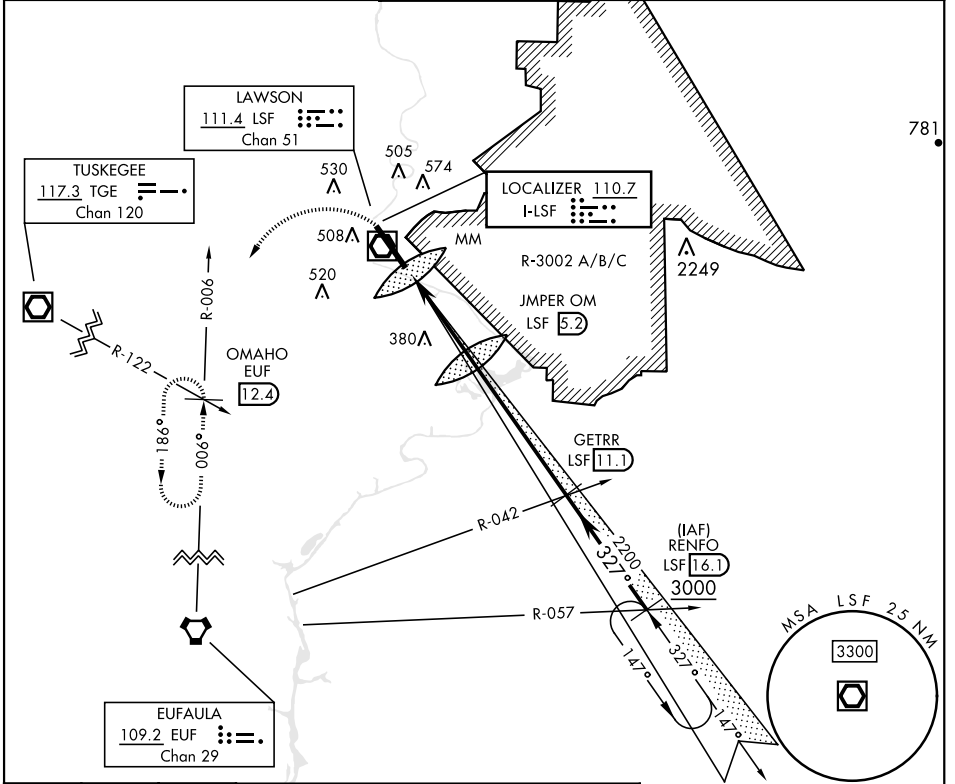
LOC I-LSF 110.7	APCH CRS 327°	Rwy ldg TDZE Arpt Elev 9302 226 227
---------------------------	-------------------------	---

[USA]

LAWSON AAF (KLSF)

<p>▼ * Circling not authorized E of Rwy 15-33.</p> <p>NA when tower closed.</p>	<p>SALSF</p> 	<p>MISSED APPROACH: Climb to 1000 then climbing left turn to 2400 via EUF R-006 to OMAHO INT/EUF 12.4 DME and hold.</p>
---	--	---

<p>ATIS ★</p> <p>134.375</p>	<p>ATLANTA APP CON</p> <p>125.5 323.1</p>	<p>TOWER</p> <p>119.05 (CTAF) 269.525</p>	<p>GND CON</p> <p>121.7 254.25</p>	<p>CLNC DEL</p> <p>121.7 251.15</p>
-------------------------------------	--	---	---	--



CATEGORY	A		B		C		D	
	S-ILS 33	426/24	200	(200-½)	426/40	200	(200-¾)	
S-LOC 33	640/40	414	(500-¾)	640/50	414	(500-1)		
CIRCLING*	820-1	593	(600-1)	840-1 ¾	613	(700-1 ¾)	880-2	653
							880-2	653
							880-2	653

FAF to MAP 4.4 NM					
Knots	60	90	120	150	180
Min:Sec	4:24	2:56	2:12	1:46	1:28

FORT MOORE, GEORGIA

32°20'N-85°00'W

LAWSON AAF (KLSF)

Orig B 22FEB24

ILS or LOC RWY 33

SE-4, 16 MAY 2024 to 13 JUN 2024

SE-4, 16 MAY 2024 to 13 JUN 2024