

# RNAV (GPS) RWY 33

WAAS CH <b>67545</b>	APCH CRS <b>330°</b>	Rwy Idg TDZE <b>9302</b> 226	Arpt Elev <b>227</b>
-------------------------	-------------------------	------------------------------------	-------------------------

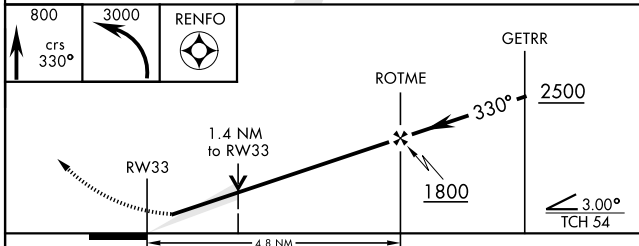
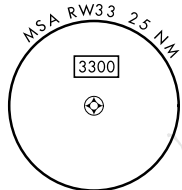
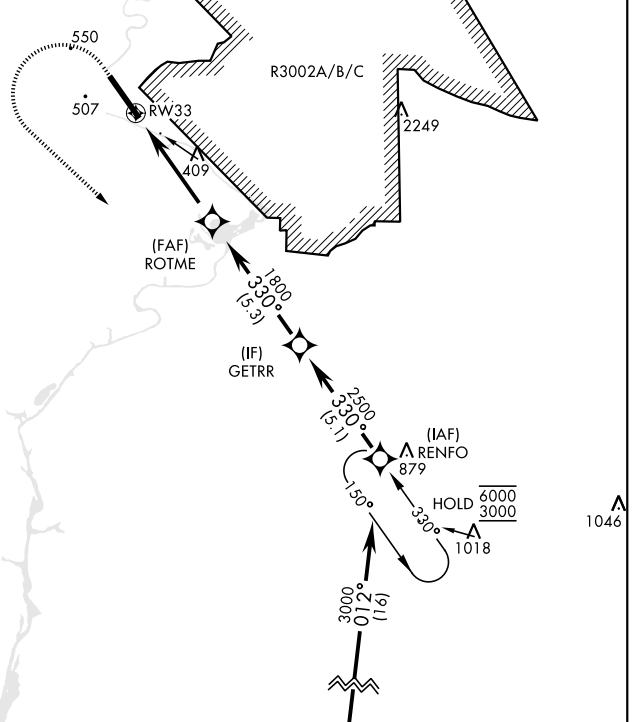
[USA]

LAWSON AAF (KLSF)

RNP APCH-GPS	SALSF <b>(A2)</b>	MISSED APPROACH: Climb to 800 then climbing left turn to 3000 direct RENFO and hold.
<p>▼ *When ALS inop, increase vis to 1½ mile.                  **When ALS inop, increase CAT AB RVR to 55, vis to 1 mile; CAT CD vis to 1½ miles.                  *** Circling not authorized NE of Rwy 15-33. Not authorized when tower closed.</p>		

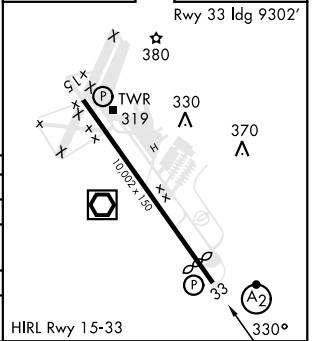
ATIS ★ <b>134.375</b>	ATLANTA APP CON <b>125.5 323.1</b>	TOWER <b>119.05 (CTAF) 269.525</b>	GND CON <b>121.7 254.25</b>	CLNC DEL <b>121.7 251.15</b>
--------------------------	---------------------------------------	---------------------------------------	--------------------------------	---------------------------------

For uncompensated Baro-VNAV systems, LNAV/VNAV below -15°C or above 54°C.



ELEV <b>227</b>	TDZE <b>226</b>
-----------------	-----------------

Rwy 33 Idg 9302'



CATEGORY	A	B	C	D
LPV DA	427/40	200	(200-¾)	
LNAV/VNAV DA*	701/60	474	(500-1½)	
LNAV MDA**	740/40 513 (600-¾)	740-1¼ 513 (600-1¼)		
*** CIRCLING	820-1	860-1	960-2	1080-2¾
	593 (600-1)	633 (700-1)	733 (800-2)	853 (900-2¾)

HRL Rwy 15-33

# RNAV (GPS) RWY 33

SE-4, 16 MAY 2024 to 13 JUN 2024

SE-4, 16 MAY 2024 to 13 JUN 2024