

# HI-ILS Y or LOC Y RWY 18

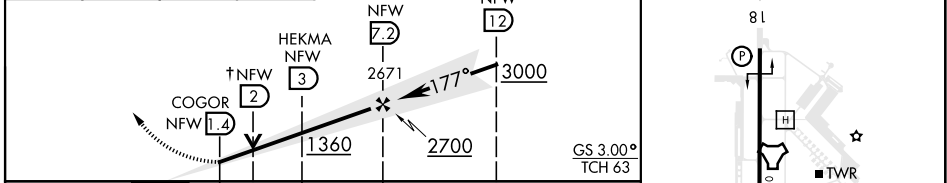
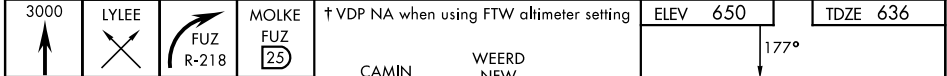
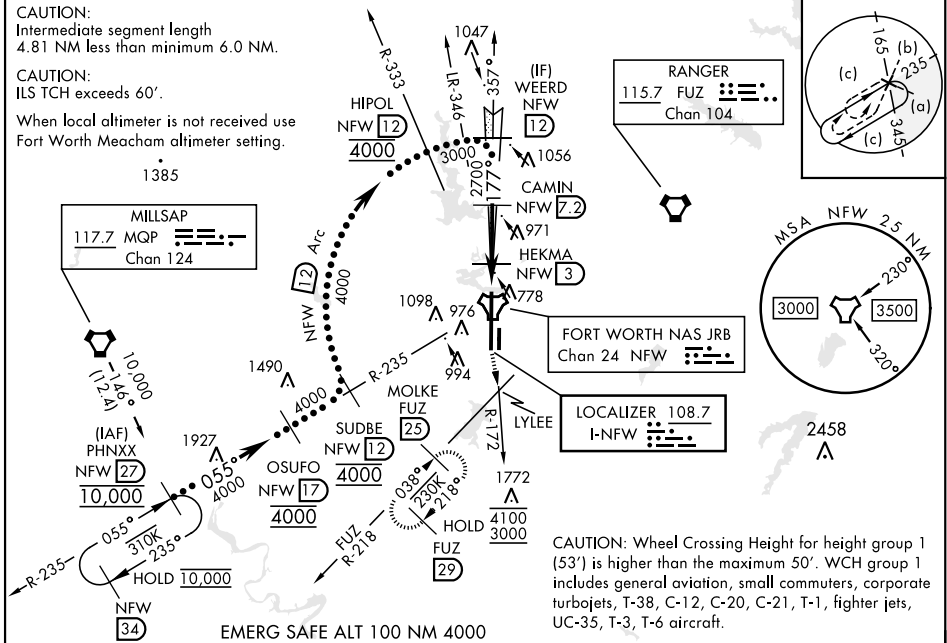
LOC I-NFW <b>108.7</b>	APCH CRS <b>177°</b>	Rwy Ldg <b>11,999</b> TDZE <b>636</b> Arpt Elev <b>650</b>	[USN]	FORT WORTH NAS JRB (CARSWELL FLD) (KNFW)
---------------------------	-------------------------	--	-------	--

FUZ VORTAC or RADAR required.

\* Circling not authorized E of Rwy 18-36.

MISSED APPROACH: Climb to 3000 direct LYLEE to intercept FUZ VORTAC R-218 to MOLKE and hold.

ATIS* <b>351.675</b>	REGIONAL APP CON <b>125.8 257.95</b>	NAVY FORT WORTH TOWER* <b>120.95 269.325</b>	GND CON <b>121.675 279.575</b>	CLNC DEL <b>126.4 254.325</b>	ASR/PAR
-------------------------	---	---	-----------------------------------	----------------------------------	---------



CATEGORY	C	D	E
S-ILS 18	836- $\frac{3}{4}$	200	(200- $\frac{3}{4}$ )
S-LOC 18	1040-1 $\frac{1}{8}$	404	(400-1 $\frac{1}{8}$ )
<b>C</b> CIRCLING*	1320-1 $\frac{3}{4}$ 670 (700-1 $\frac{3}{4}$ )	1340-2 $\frac{1}{4}$ 690 (700-2 $\frac{1}{4}$ )	1440-2 $\frac{3}{4}$ 790 (800-2 $\frac{3}{4}$ )
FORT WORTH MEACHAM ALTIMETER			
S-ILS 18	856- $\frac{3}{4}$	220	(300- $\frac{3}{4}$ )
S-LOC 18	1060-1 $\frac{1}{4}$	424	(500-1 $\frac{1}{4}$ )
<b>C</b> CIRCLING*	1340-2 690 (700-2)	1360-2 $\frac{1}{4}$ 710 (800-2 $\frac{1}{4}$ )	1460-2 $\frac{3}{4}$ 810 (900-2 $\frac{3}{4}$ )

FAF to MAP 5.8 NM					
Knots	120	140	160	180	200
Min:Sec	2:54	2:29	2:11	1:56	1:44

# HI-ILS Y or LOC Y RWY 18

SC-2, 16 MAY 2024 to 13 JUN 2024

SC-2, 16 MAY 2024 to 13 JUN 2024