

HI-TACAN Y RWY 18

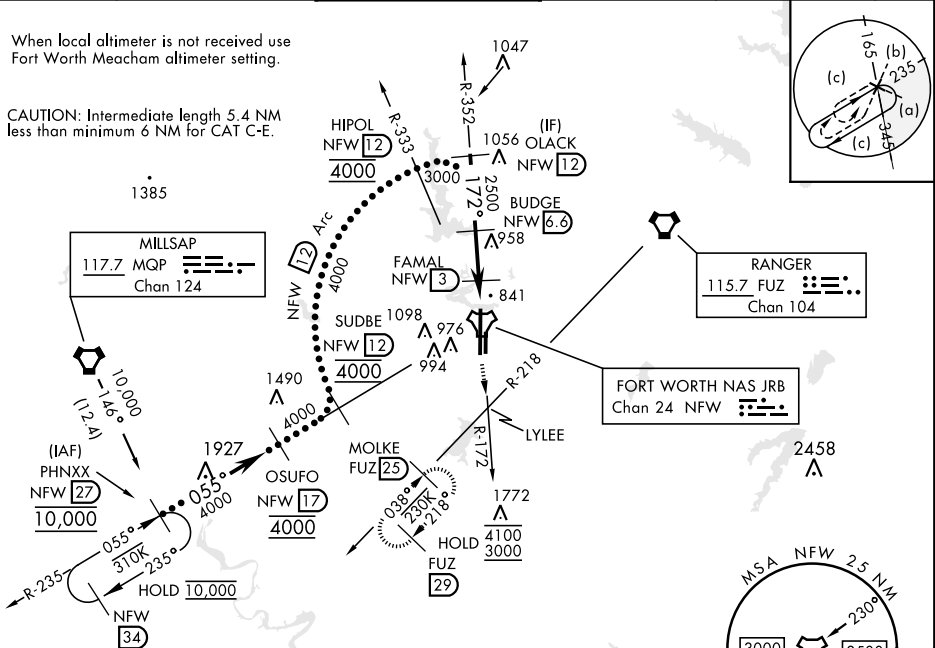
TACAN NFW Chan 24	APCH CRS 172°	Rwy Ildg 11,999 TDZE 636 Arpt Elev 650	[USN]	FORT WORTH NAS JRB (CARSWELL FLD) (KNFW)
-----------------------------	-------------------------	---	-------	--

FUZ VORTAC or RADAR required. * Circling not authorized E of Rwy 18-36.	MISSED APPROACH: Climb to 3000 direct LYLEE to intercept FUZ VORTAC R-218 to MOLKE and hold.
--	---

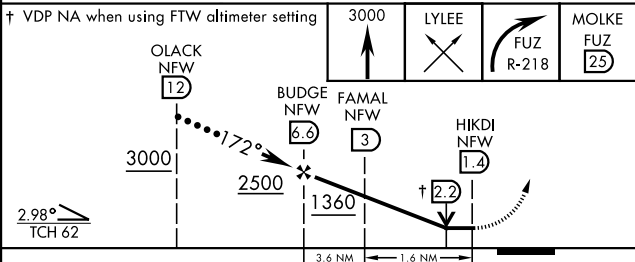
ATIS* 351.675	REGIONAL APP CON 125.8 257.95	NAVY FORT WORTH TOWER* 120.950 269.325	GND CON 121.675 279.575	CLNC DEL 126.4 254.325	ASR/ PAR
-------------------------	---	--	-----------------------------------	----------------------------------	-------------

When local altimeter is not received use Fort Worth Meacham altimeter setting.

CAUTION: Intermediate length 5.4 NM less than minimum 6 NM for CAT C-E.

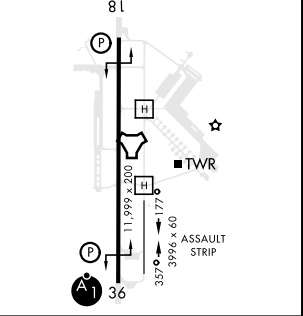


EMERG SAFE ALT 100 NM 4000



ELEV 650	TDZE 636
172°	REIL Rwy 18
81	HIRL Rwy 18-36

CATEGORY	C	D	E
S-18	1100-1 ³ / ₈	464	(500-1 ³ / ₈)
CIRCLING*	1320-1 ³ / ₄ 670 (700-1 ³ / ₄)	1340-2 ¹ / ₄ 690 (700-2 ¹ / ₄)	1440-2 ³ / ₄ 790 (800-2 ³ / ₄)
FORT WORTH MEACHAM ALTIMETER			
S-18	1120-1 ³ / ₈	484	(500-1 ³ / ₈)
CIRCLING*	1340-2 690 (700-1)	1360-2 ¹ / ₄ 710 (700-2 ¹ / ₄)	1460-2 ³ / ₄ 810 (900-2 ³ / ₄)



HI-TACAN Y RWY 18

SC-2, 16 MAY 2024 TO 13 JUN 2024

SC-2, 16 MAY 2024 TO 13 JUN 2024