

FORT WORTH, TEXAS

# RNAV (GPS) RWY 36

FORT WORTH NAS JRB (CARSWELL FLD) (KNFW)

WAAS CH <b>49487</b> <b>W36A</b>	APCH CRS <b>357°</b>	Rwy Idg <b>11,999</b> TDZE <b>650</b> Arprt Elev <b>650</b>
--	-------------------------	---

[USN]

RNP APCH

ALS-1

MISSED APPROACH: Climb to 1700, then climbing left turn to 3000 direct HIPOL and hold.

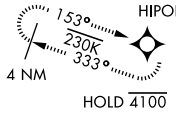
▼ \* When ALS inop, increase vis to ¾ mile.



ATIS* <b>351.675</b>	REGIONAL APP CON <b>125.8 257.95</b>	NAVY FORT WORTH TOWER* <b>120.950 269.325</b>	GND CON <b>121.675 279.575</b>	CLNC DEL <b>126.4 254.325</b>	ASR/ PAR
-------------------------	---	--	-----------------------------------	----------------------------------	-------------

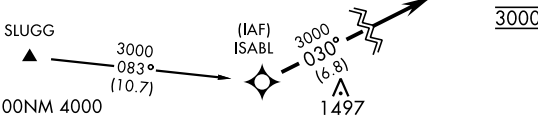
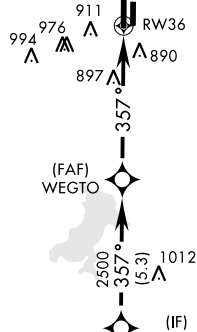
•1329

- \*\* When ALS inop, increase CAT AB vis to 1 mile, CAT CD vis to 1/8 miles.
- \*\*\* When ALS inop, increase vis to 1/8 miles, Baro VNAV NA when local altimeter not received.
- \*\*\*\* Circling not authorized E of Rwy 18-36.

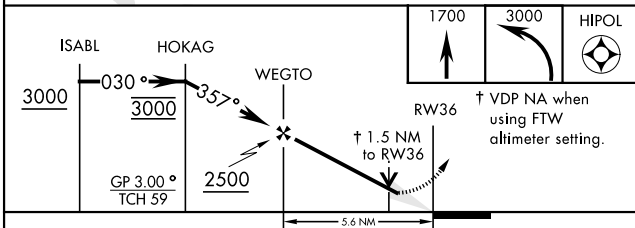


When local altimeter is not received use Fort Worth Meacham altimeter setting.

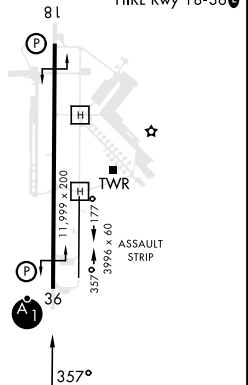
For uncompensated BaroVNAV systems, LNAV/VNAV NA below -16°C(4°F) or above 54°C(129°F).



EMERG SAFE ALT 100NM 4000



ELEV 650	TDZE 650
	REIL Rwy 18
	HIRL Rwy 18-36



CATEGORY	A	B	C	D
LPV DA *	850-½		200	(200-½)
LNAV MDA **	1200-½	550 (600-½)	1200-1¼	550 (600-1¼)
LNAV/VNAV DA ***	1195-1½		545	(600-1½)
CIRCLING ****	1220-1 570 (600-1)	1320-1 670 (700-1)	1320-1¾ 670 (700-1¾)	1340-2¼ 690 (700-2¼)
FORT WORTH MEACHAM ALTIMETER				
LPV DA *	870-½		220	(300-½)
LNAV MDA **	1220-½	570 (600-½)	1220-1¼	570 (600-1¼)
CIRCLING ****	1240-1 590 (600-1)	1340-1 690 (700-1)	1340-2 690 (700-2)	1360-2¼ 710 (800-2¼)

FORT WORTH, TEXAS

32°46'N-97°26'W

FORT WORTH NAS JRB (CARSWELL FLD) (KNFW)

Amdt 2 18MAY23

# RNAV (GPS) RWY 36

SC-2, 16 MAY 2024 TO 13 JUN 2024

SC-2, 16 MAY 2024 TO 13 JUN 2024