

BAYYY FIVE ARRIVAL (RNAV) Transition Routes

HOUSTON, TEXAS

SC-5, 16 MAY 2024 to 13 JUN 2024

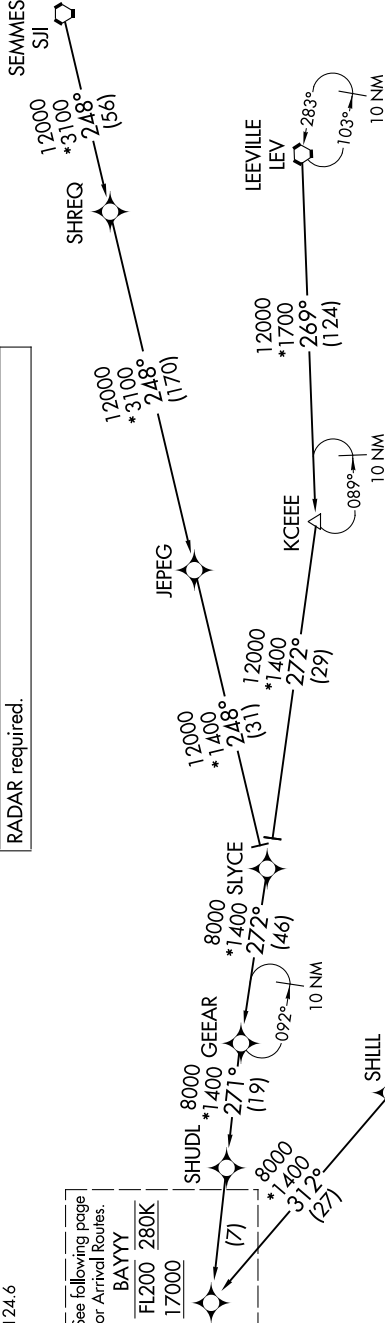
HOUSTON.APP.CON  
119.625 226.675  
D-AIS  
124.6

See following page  
for Arrival Routes.  
BAYYY  
FL200 280K  
17000

RNAV 1-DME/DME/IRU or GPS.

KELPP, PEGLG, and SEAGL TRANSITIONS, RNAV 1-GPS.

RADAR required.



NOTE: Expect runway assignment from Houston TRACON upon initial contact.  
 NOTE: For jet and turboprop aircraft capable of 280K or greater only.  
 NOTE: Jet aircraft descend via mach number until intercepting 280K.  
 Maintain 280K until slowed by the STAR.

- KCEEE TRANSITION (KCEEE.BAYYY5)
- KELPP TRANSITION (KELPP.BAYYY5)
- LEEVILLE TRANSITION (LEV.BAYYY5)
- PEGLG TRANSITION (PEGLG.BAYYY5)
- SEAGL TRANSITION (SEAGL.BAYYY5)
- SEMMES TRANSITION (SJI.BAYYY5)
- SHILL TRANSITION (SHILL.BAYYY5)

NOTE: Chart not to scale.

(CONTINUED ON FOLLOWING PAGE)

SC-5, 16 MAY 2024 to 13 JUN 2024

BAYYY FIVE ARRIVAL (RNAV) Transition Routes

HOUSTON, TEXAS