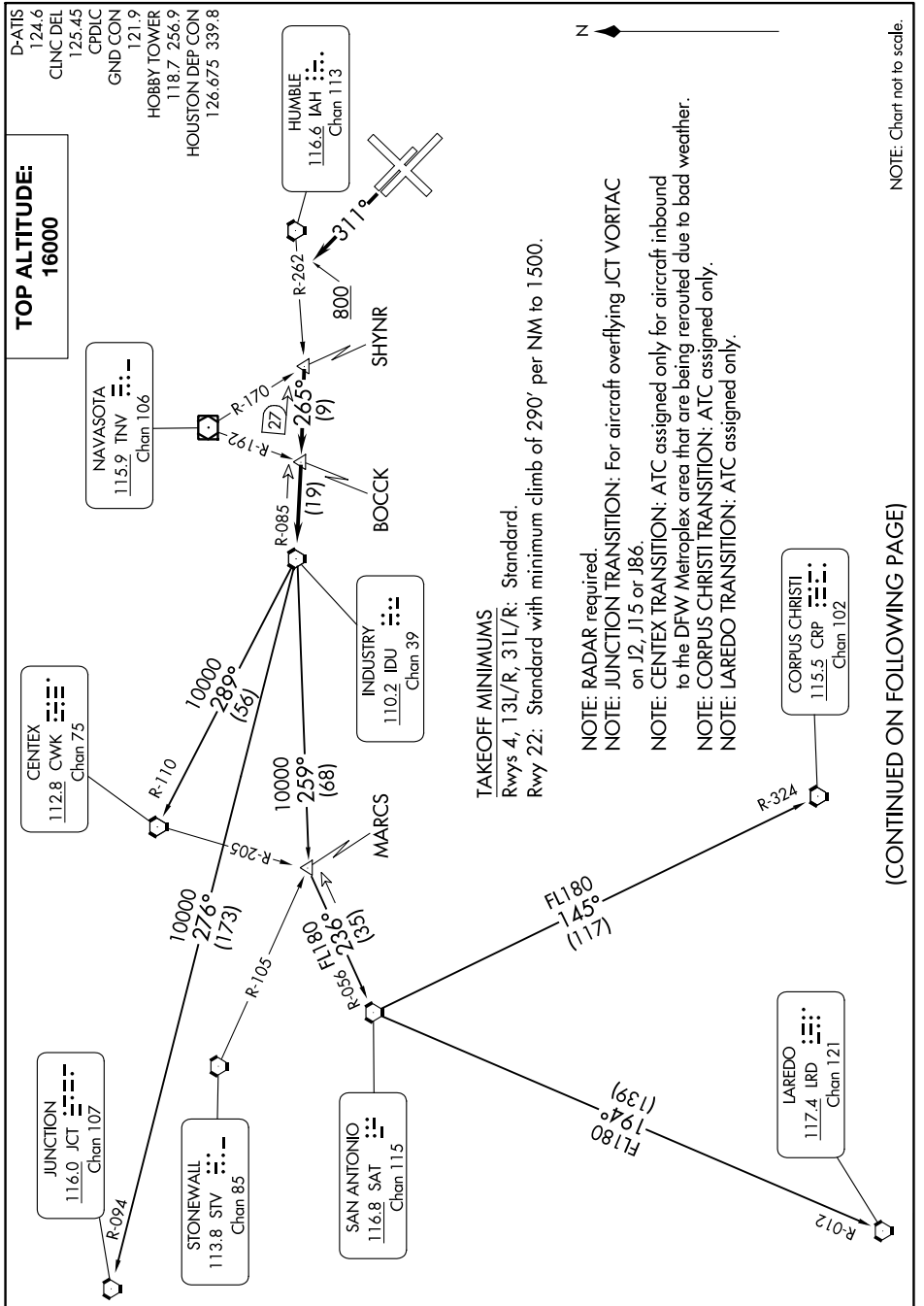


# INDUSTRY ONE DEPARTURE

SC-5, 16 MAY 2024 to 13 JUN 2024



**TOP ALTITUDE:**  
**16000**

**TAKEOFF MINIMUMS**  
 Rwys 4, 13L/R, 31L/R: Standard.  
 Rwy 22: Standard with minimum climb of 290' per NM to 1500.

- NOTE: RADAR required.
- NOTE: JUNCTION TRANSITION: For aircraft overflying JCT VORTAC on J2, J15 or J86.
- NOTE: CENTEX TRANSITION: ATC assigned only for aircraft inbound to the DFW Metroplex area that are being rerouted due to bad weather.
- NOTE: CORPUS CHRISTI TRANSITION: ATC assigned only.
- NOTE: LAREDO TRANSITION: ATC assigned only.

(CONTINUED ON FOLLOWING PAGE)

NOTE: Chart not to scale.

SC-5, 16 MAY 2024 to 13 JUN 2024

# INDUSTRY ONE DEPARTURE