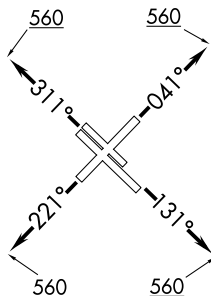


# PTRON NINE DEPARTURE (RNAV)

D-ATIS  
124.6  
CLNC DEL  
125.45  
CPDLC  
GND CON  
121.9  
HOBBY TOWER  
118.7 256.9  
HOUSTON DEP CON  
127.125 269.075

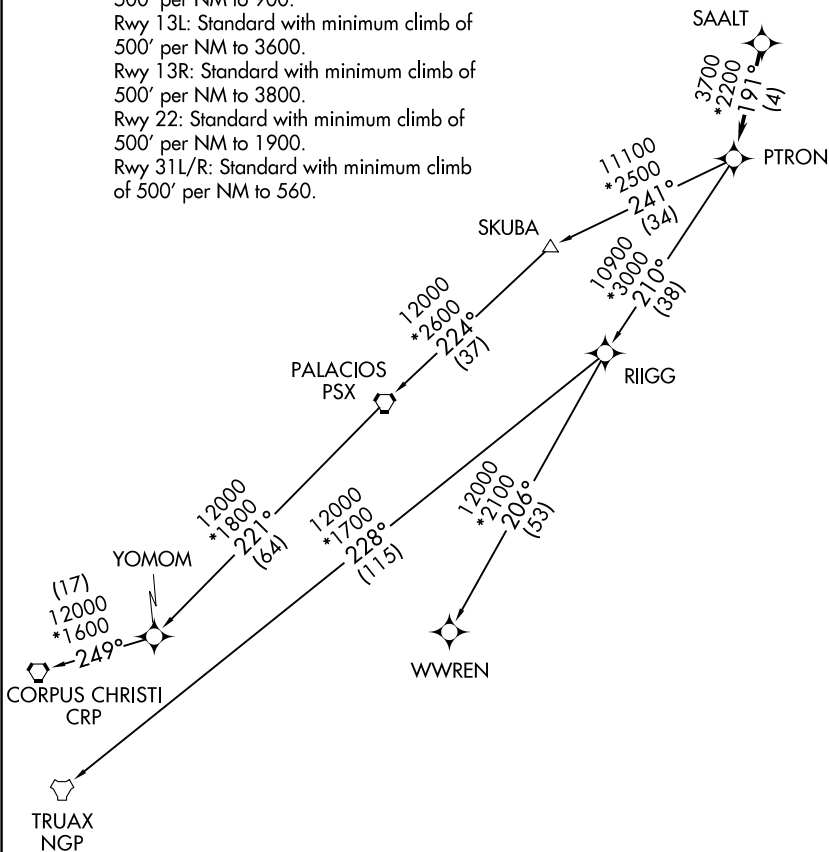
RNAV 1 - DME/DME/IRU or GPS.  
RADAR required.

**TOP ALTITUDE:  
16000**



### TAKEOFF MINIMUMS

- Rwy 4: Standard with minimum climb of 500' per NM to 900.
- Rwy 13L: Standard with minimum climb of 500' per NM to 3600.
- Rwy 13R: Standard with minimum climb of 500' per NM to 3800.
- Rwy 22: Standard with minimum climb of 500' per NM to 1900.
- Rwy 31L/R: Standard with minimum climb of 500' per NM to 560.



SC-5, 16 MAY 2024 to 13 JUN 2024

SC-5, 16 MAY 2024 to 13 JUN 2024

NOTE: Chart not to scale.

(NARRATIVE ON FOLLOWING PAGE)

# PTRON NINE DEPARTURE (RNAV)