

WAAS CH 70310 W13A	APP CRS 131°	Rwy ldg 6568 TDZE 46 Apt Elev 46
--	------------------------	---

RNAV (GPS) RWY 13R

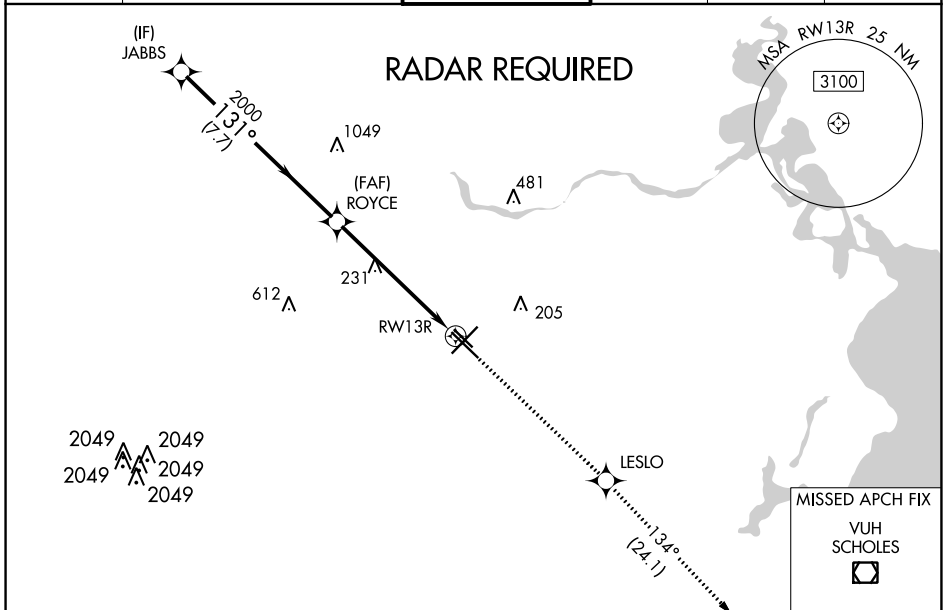
WILLIAM P HOBBY (HOU)

▽ For uncompensated Baro-VNAV systems, LNAV/VNAV NA below -15°C or above 54°C. DME/DME RNP-0.3 NA. For inop ALS, increase LPV all Cats visibility to RVR 5000; increase LNAV/VNAV Cats A/B/C/D visibility to 1½ SM, Cat E to 1½ SM; and increase LNAV Cats A/B visibility to RVR 5500, Cats C/D to 1½ SM, Cat E to 1¾ SM. Rwy 13R helicopter visibility reduction below ¾ SM NA.

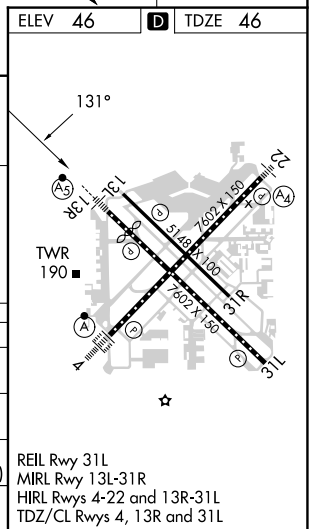


MISSED APPROACH: Climb to 2200 direct LESLO and on track 134° to VUH VOR/DME.

D-ATIS 124.6	HOUSTON APP CON 120.05 379.1 EAST 124.35 316.15 WEST	HOBBY TOWER 118.7 256.9	GND CON 121.9	CLNC DEL 125.45	CPDLC
------------------------	--	-----------------------------------	-------------------------	---------------------------	-------



	ELEV 46		D TDZE 46			
	JABBS	ROYCE	2200	LESLO	tr 134°	VUH
	2000	2000	↑	✧	↔	☐
	*1.4 NM to RWY13R		*LNAV only			
	GP 3.00°	TCH 49				
	7.7 NM		4.5 NM		1.4 NM	
CATEGORY	A	B	C	D	E	
LPV DA	330/40		284 (300-¾)			
LNAV/VNAV DA	475/50		429 (500-1)			
LNAV MDA	540/40	494 (500-¾)	540/50	494 (500-1)	540/60	494 (500-1¼)
CIRCLING	540-1	494 (500-1)	740-2¼	694 (700-2¼)	860-3	814 (900-3)



REIL Rwy 31L
MIRL Rwy 13L-31R
HIRL Rwys 4-22 and 13R-31L
TDZ/CL Rwys 4, 13R and 31L

SC-5, 16 MAY 2024 to 13 JUN 2024

SC-5, 16 MAY 2024 to 13 JUN 2024