

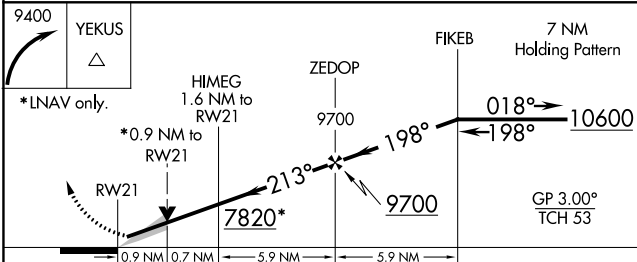
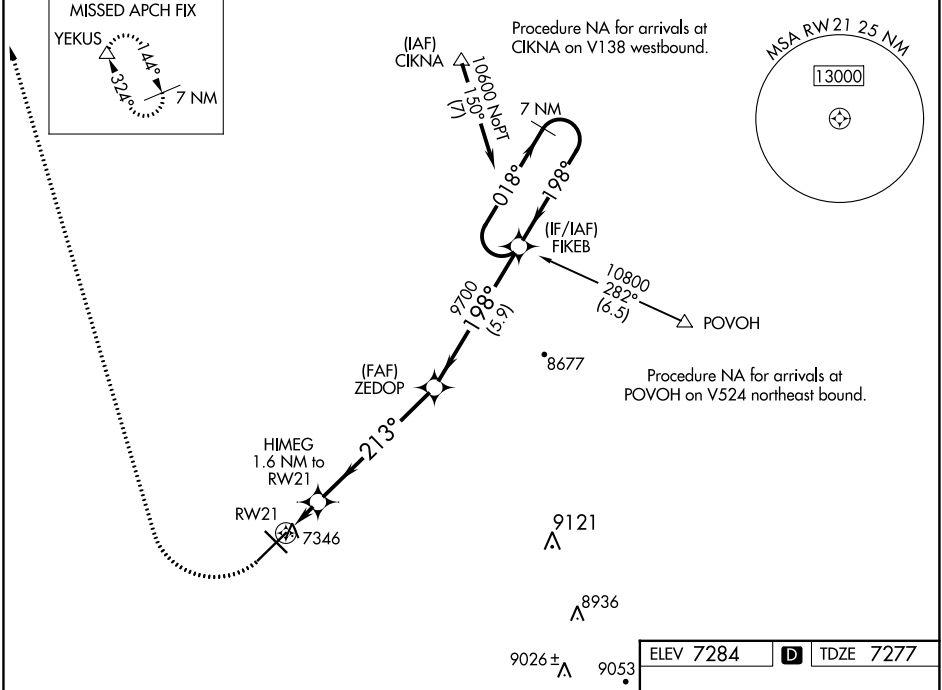
RNAV (GPS) RWY 21

LARAMIE RGNL (L.A.R.)

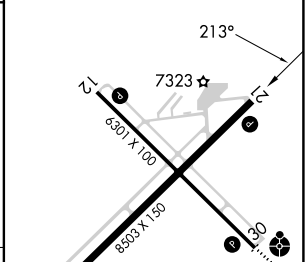
WAAS CH 72825 W21A	APP CRS 213°	Rwy Idg TDZE Apt Elev	8503 7277 7284
--	------------------------	-----------------------------	---

<p>⚠ Circling to Rwy 30 NA at night. Baro-VNAV NA. DME/DME RNP-0.3 NA.</p>	<p>MISSED APPROACH: Climbing right turn to 9400 direct YEKUS and hold.</p>
---	--

ASOS 135.475	DENVER CENTER 125.9 284.7	UNICOM 123.05 (CTAF) 📻
------------------------	-------------------------------------	---



ELEV 7284	D	TDZE 7277
-----------	----------	-----------



CATEGORY	A	B	C	D
LPV DA		7527- $\frac{3}{4}$	250 (300- $\frac{3}{4}$)	
LNAV/VNAV DA		7527- $\frac{3}{4}$	250 (300- $\frac{3}{4}$)	
LNAV MDA		7600-1	323 (400-1)	
CIRCLING	7660-1 376 (400-1)	7760-1 476 (500-1)	7880-1½ 596 (600-1½)	7920-2 636 (700-2)

REIL Rwy 3, 12 and 21 **📻**
MIRL Rwy 3-21 and 12-30 **📻**

NW-1, 16 MAY 2024 to 13 JUN 2024

NW-1, 16 MAY 2024 to 13 JUN 2024