

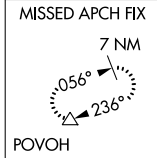
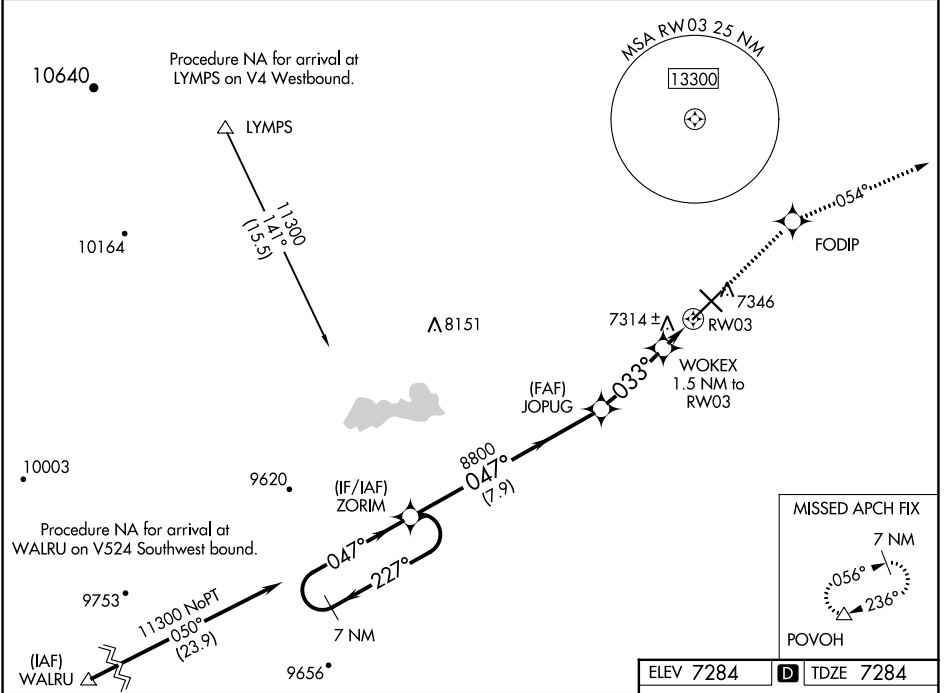
WAAS CH <b>86325</b> <b>W03A</b>	APP CRS <b>033°</b>	Rwy Idg TDZE Apt Elev <b>8503</b> <b>7284</b> <b>7284</b>
--	------------------------	--

# RNAV (GPS) RWY 3

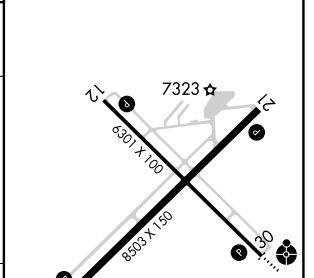
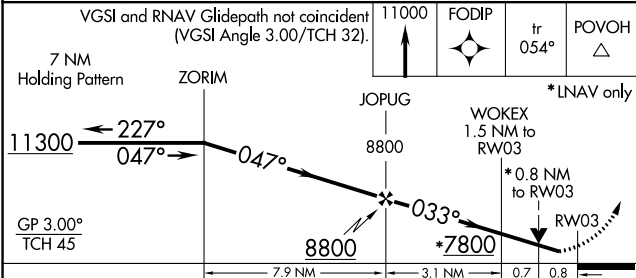
LARAMIE RGNL (L.A.R.)

	DME/DME RNP-0.3 NA. Circling to Rwy 30 NA at night. Baro-VNAV NA. Helicopter visibility reduction below 3/4 SM NA.	MISSED APPROACH: Climb to 11000 direct FODIP and on track 054° to POVOH and hold, continue climb-in-hold to 11000.
--	--	--

ASOS <b>135.475</b>	DENVER CENTER <b>125.9 284.7</b>	UNICOM <b>123.05 (CTAF) 0</b>
------------------------	-------------------------------------	----------------------------------



ELEV 7284	<b>D</b> TDZE 7284
-----------	--------------------



CATEGORY	A	B	C	D
LPV DA		7534-3/4	250 (300-3/4)	
LNAV/VNAV DA		7534-3/4	250 (300-3/4)	
LNAV MDA	7580-1	296 (300-1)	7580-7/8	296 (300-7/8)
CIRCLING	7660-1 376 (400-1)	7760-1 476 (500-1)	7880-1 1/2 596 (600-1 1/2)	7920-2 636 (700-2)

REIL Rwy 3, 12 and 21 <b>0</b>	MIRL Rwy 3-21 and 12-30 <b>0</b>
--------------------------------	----------------------------------

NW-1, 16 MAY 2024 to 13 JUN 2024

NW-1, 16 MAY 2024 to 13 JUN 2024