

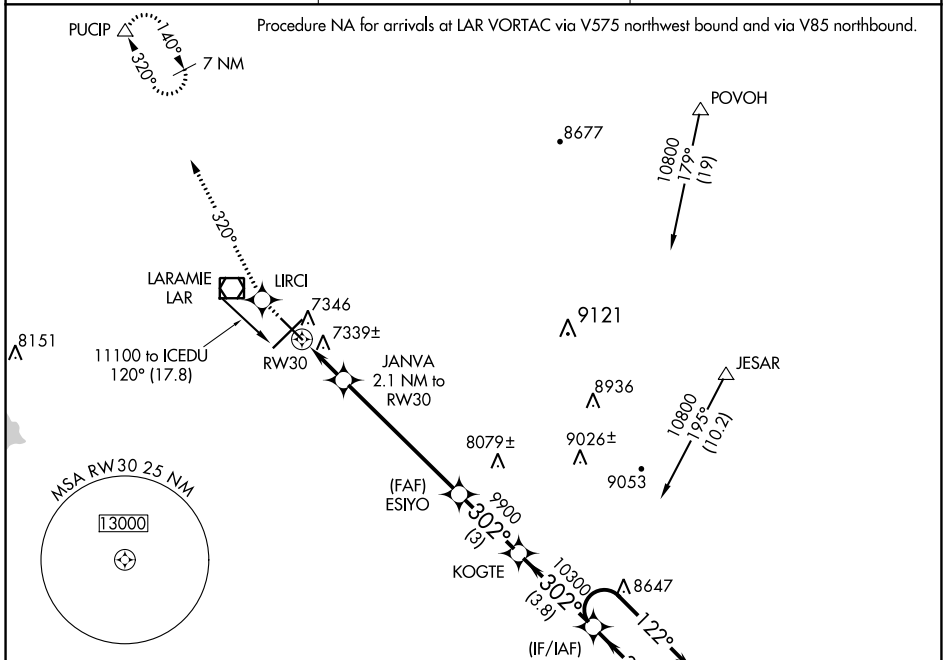
WAAS CH 53600 W30A	APP CRS 302°	Rwy Idg TDZE Apt Elev	6301 7278 7284
---------------------------------	------------------------	-----------------------------	---

RNAV (GPS) RWY 30

LARAMIE RGNL (L.A.R.)

<p>▽ Inop table does not apply. DME/DME RNP-0.3 NA. For uncompensated Baro-VNAV systems, LNAV/VNAV NA below -29°C (-20°F) or above 35°C (95°F).</p>	<p>ODALS</p>	<p>MISSED APPROACH: Climb to 9400 direct LIRCI and via 320° track to PUCIP and hold.</p>
--	---------------------	--

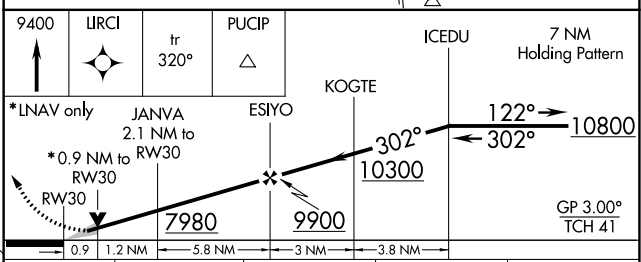
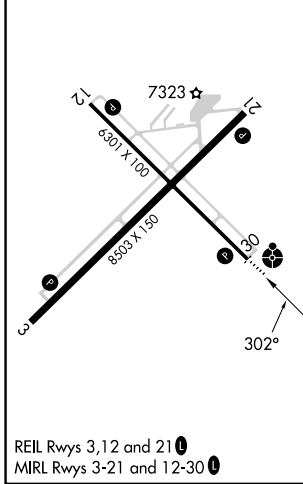
<p>ASOS 135.475</p>	<p>DENVER CENTER 125.9 284.7</p>	<p>UNICOM 123.05 (CTAF) 0</p>
--------------------------------	---	---



NW-1, 16 MAY 2024 to 13 JUN 2024

NW-1, 16 MAY 2024 to 13 JUN 2024

ELEV 7284	D	TDZE 7278
-----------	----------	-----------



CATEGORY	A	B	C	D
LPV DA	7528-1 250 (300-1)			
LNAV/VNAV DA	7629-1¼ 351 (400-1¼)			
LNAV MDA	7600-1 322 (400-1)			
CIRCLING	7660-1¼ 376 (400-1¼)	7760-1¼ 476 (500-1¼)	7880-1½ 596 (600-1½)	7920-2 636 (700-2)