
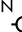



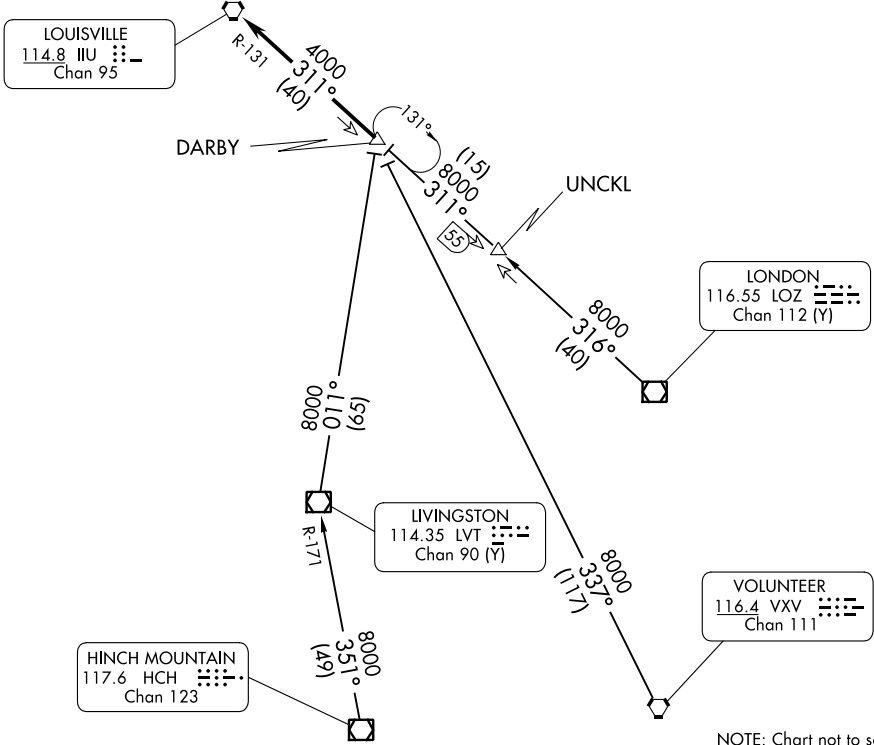
# DARBY EIGHT ARRIVAL

LOUISVILLE, KENTUCKY

LOUISVILLE APP CON  
 132.075 327.0  
 LOU ATIS  
 124.15  
 SDF D-ATIS  
 118.725

CLARK RGNL   
 BOWMAN FLD   
 LOUISVILLE MUHAMMAD ALI INTL 

NOTE: RADAR required.  
 NOTE: DME required for LONDON and UNCKL transitions.



SE-1, 16 MAY 2024 to 13 JUN 2024

SE-1, 16 MAY 2024 to 13 JUN 2024

NOTE: Chart not to scale.

## ARRIVAL ROUTE DESCRIPTION

**HINCH MOUNTAIN TRANSITION (HCH.DARBY8):** From over HCH VOR/DME on HCH R-351 and LVT R-171 to LVT VOR/DME, then on LVT R-011 to DARBY. Thence. . .

**LONDON TRANSITION (LOZ.DARBY8):** From over LOZ VOR/DME on LOZ R-316 to UNCKL, then on IIU R-131 to DARBY. Thence. . .

**UNCKL TRANSITION (UNCKL.DARBY8):** From over UNCKL on IIU R-131 to DARBY. Thence. . .

**VOLUNTEER TRANSITION (VXV.DARBY8):** From over VXV VORTAC on VXV R-337 to DARBY. Thence. . .

. . . . from DARBY on IIU R-131 to IIU VORTAC. Expect RADAR vectors to final course.