

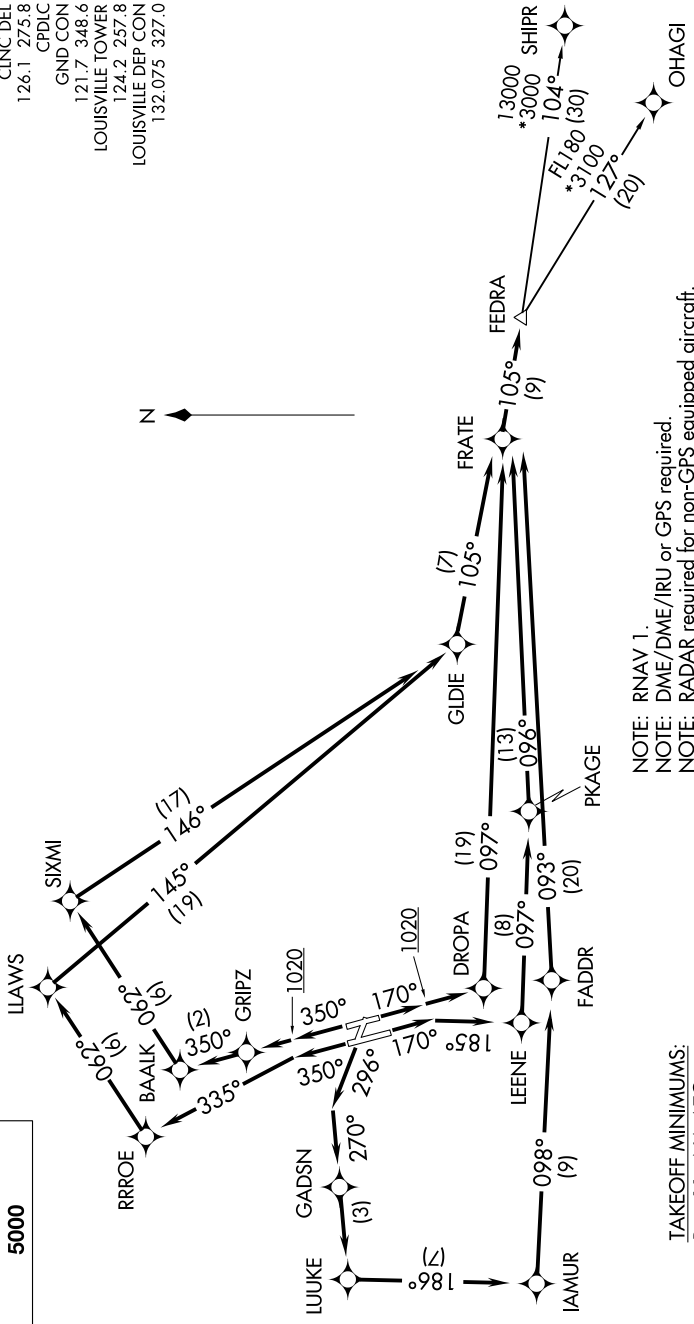
# FEDRA FIVE DEPARTURE (RNAV)

LOUISVILLE, KENTUCKY

D-ATIS 118.725  
 CLINC DEL 126.1 275.8  
 CPDIC  
 GND CON 121.7 348.6  
 LOUISVILLE TOWER 124.2 257.8  
 LOUISVILLE DEP CON 132.075 327.0



**TOP ALTITUDE:**  
 5000



- NOTE: RNAV 1.
- NOTE: DME/DME/IRU or GPS required.
- NOTE: RADAR required for non-GPS equipped aircraft.
- NOTE: For Turbojet aircraft only.
- NOTE: If unable to accept climb rate, advise ATC on initial contact.
- NOTE: Transponder code will be issued via PDC or Louisville clearance delivery.

TAKEOFF MINIMUMS:  
 Rwy 11: NA-ATC.  
 Rwys 17L/R, 29, 35L/R: Standard with minimum climb of 500' per NM to 1020.

NOTE: Chart not to scale.

(NARRATIVE ON FOLLOWING PAGE)

SE-1, 16 MAY 2024 to 13 JUN 2024

SE-1, 16 MAY 2024 to 13 JUN 2024

# FEDRA FIVE DEPARTURE (RNAV)

(FEDRA5.FEDRA) 15AUG19

LOUISVILLE, KENTUCKY

LOUISVILLE MUHAMMAD ALI INTL (SDF)