

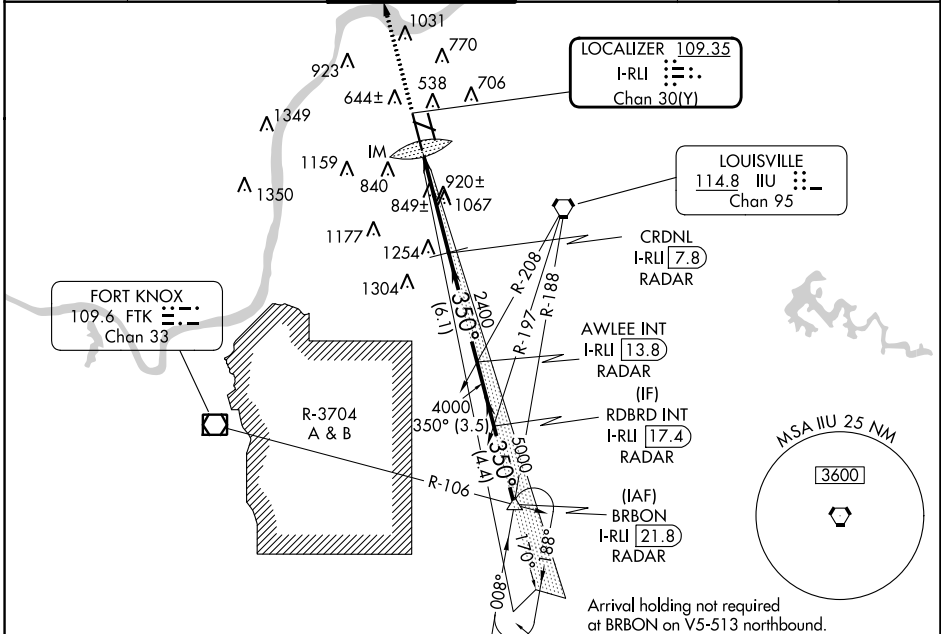
LOC/DME I-RLI <b>109.35</b> Chan <b>30(Y)</b>	APP CRS <b>350°</b>	Rwy Idg TDZE <b>464</b> Apt Elev <b>501</b>	<b>10000</b>
---	------------------------	---	--------------

# ILS RWY 35L (SA CAT I)

LOUISVILLE MUHAMMAD ALI INTL (SDF')

RADAR required.		ALSF-2	MISSED APPROACH: Climb to 4000 on heading 350°, expect RADAR vectors.
Simultaneous approach authorized. Requires specific OPSPEC, MSPEC, or LOA approval and use of HUD to DH.			

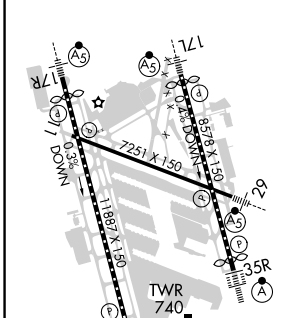
D-ATIS <b>118.725</b>	LOUISVILLE APP CON <b>132.075 327.0</b>	LOUISVILLE TOWER <b>124.2 257.8</b>	GND CON <b>121.7 348.6</b>	CLNC DEL <b>126.1 275.8</b>	CPDLC
--------------------------	--	--	-------------------------------	--------------------------------	-------



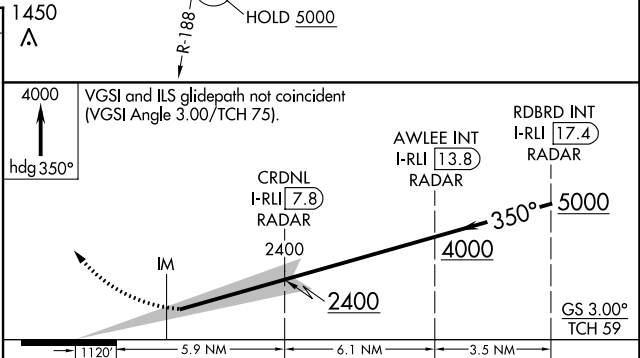
SE-1, 16 MAY 2024 to 13 JUN 2024

SE-1, 16 MAY 2024 to 13 JUN 2024

ELEV 501	<b>D</b>	TDZE 464
----------	----------	----------



HIRL all Rwys  
TDZ/CL Rwys 17L, 17R, 35L, and 35R



CATEGORY	A	B	C	D
S-ILS 35L	RA 154/14 150 DA 614			

**SA CATEGORY I ILS - SPECIAL AIRCREW & AIRCRAFT CERTIFICATION REQUIRED**