

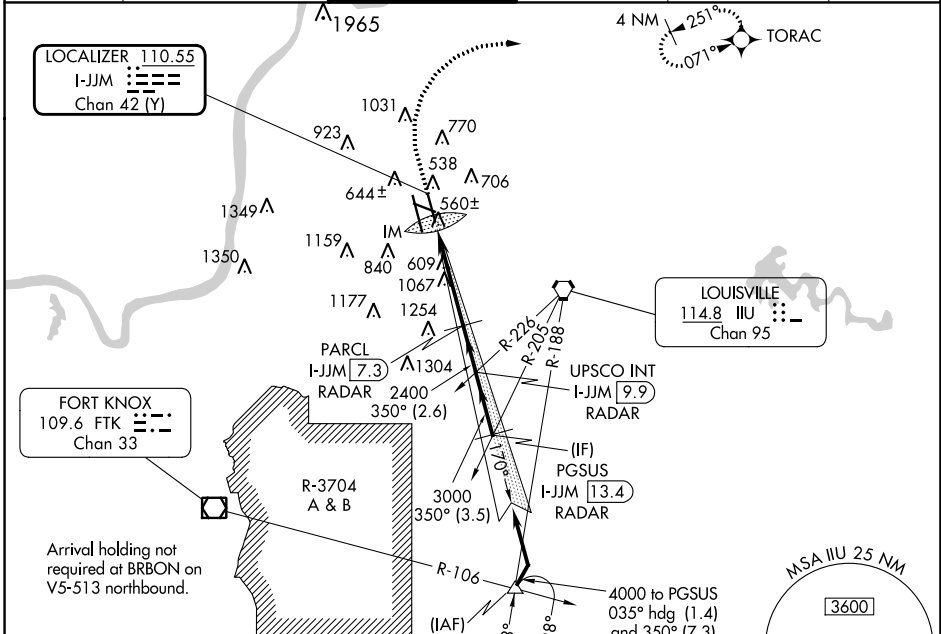
LOC/DME I-JJM 110.55	APP CRS 350°	Rwy Idg 7800
Chan 42 (Y)	TDZE 480	Apt Elev 501

ILS RWY 35R (CAT II & III)

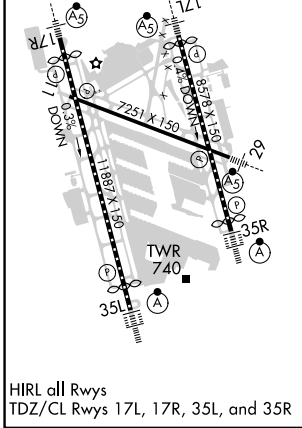
LOUISVILLE MUHAMMAD ALI INTL (SDF)

RNAV 1-GPS required.	ALSIF-2	MISSED APPROACH: Climb to 1600 then climbing right turn to 4000 direct TORAC and hold.
Simultaneous approach authorized. Cat II: RVR 1000 authorized with specific OPSPEC, MSPEC, or LOA approval and use of autoland or HUD to touchdown.		

D-ATIS 118.725	LOUISVILLE APP CON 132.075 327.0	LOUISVILLE TOWER 124.2 257.8	GND CON 121.7 348.6	CLNC DEL 126.1 275.8	CPDLC
--------------------------	--	--	-------------------------------	--------------------------------	-------



ELEV 501	D	TDZE 480
----------	----------	----------



1600	4000	TORAC	PGSUS I-JJM 13.4 RADAR
VGSi and ILS glidepath not coincident (VGSi Angle 3.00/TCH 72).			
PARCL I-JJM 7.3 RADAR	UPSICO INT I-JJM 9.9 RADAR	4000	
2400	3000	350°	
IM 609	2400	GS 3.00° TCH 60	
5.9 NM	2.6 NM	3.5 NM	
CATEGORY	A	B	C
S-ILS 35R	CAT II RA 100/12 100 DA 580		
S-ILS 35R	CAT III RVR 06		

CATEGORY II & III ILS - SPECIAL AIRCREW & AIRCRAFT CERTIFICATION REQUIRED

SE-1, 16 MAY 2024 to 13 JUN 2024

SE-1, 16 MAY 2024 to 13 JUN 2024