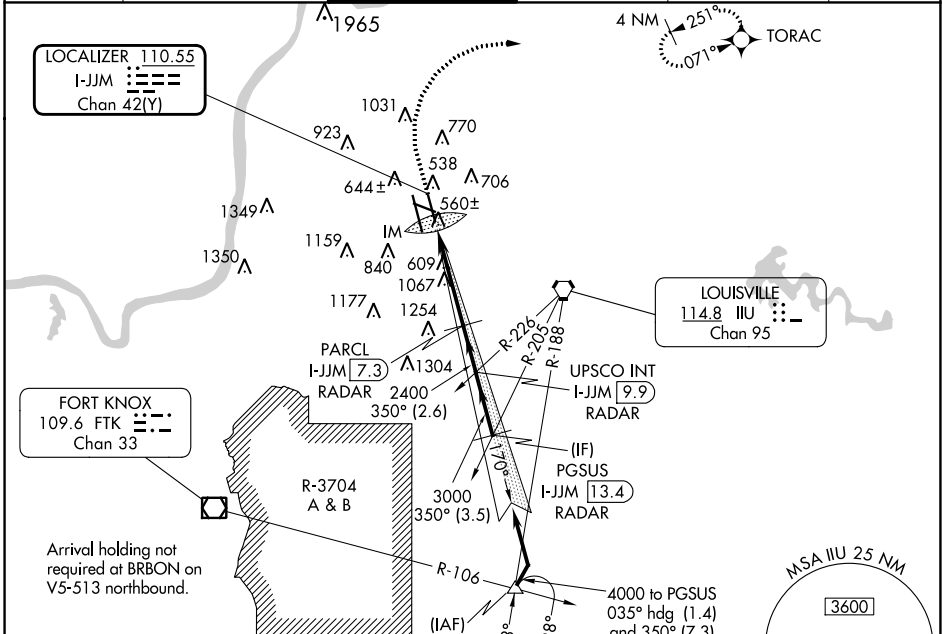


LOC/DME 1-JJM <b>110.55</b> Chan <b>42(Y)</b>	APP CRS <b>350°</b>	Rwy Idg TDZE Apt Elev	<b>7800</b> <b>480</b> <b>501</b>
---	------------------------	-----------------------------	---

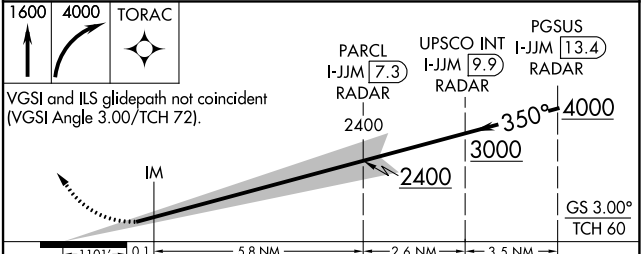
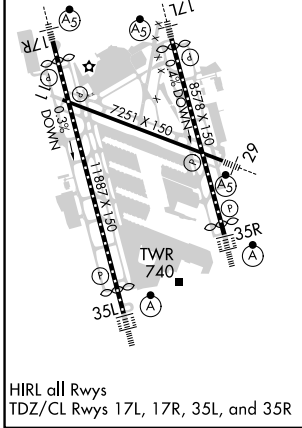
**ILS RWY 35R (SA CAT I)**  
LOUISVILLE MUHAMMAD ALI INTL (SDF')

RNAV 1-GPS required.	ALSIF-2	MISSED APPROACH: Climb to 1600 then climbing right turn to 4000 direct TORAC and hold.
Simultaneous approach authorized. Requires specific OPSPEC, MSPEC, or LOA approval and use of HUD to DH.		

D-ATIS <b>118.725</b>	LOUISVILLE APP CON <b>132.075 327.0</b>	LOUISVILLE TOWER <b>124.2 257.8</b>	GND CON <b>121.7 348.6</b>	CLNC DEL <b>126.1 275.8</b>	CPDLC
--------------------------	--	--	-------------------------------	--------------------------------	-------



ELEV 501	<b>D</b>	TDZE 480
----------	----------	----------



CATEGORY	A	B	C	D
S-ILS 35R	RA 162/14 150 DA 630			

**SA CATEGORY I ILS- SPECIAL AIRCREW & AIRCRAFT CERTIFICATION REQUIRED**

SE-1, 16 MAY 2024 to 13 JUN 2024

SE-1, 16 MAY 2024 to 13 JUN 2024