


LOC/DME I-PKI 111.95	APP CRS 170°	Rwy ldg 7800
Chan 56 (Y)	TDZE 499	Apt Elev 501

ILS or LOC RWY 17L

LOUISVILLE MUHAMMAD ALI INTL (SDF)

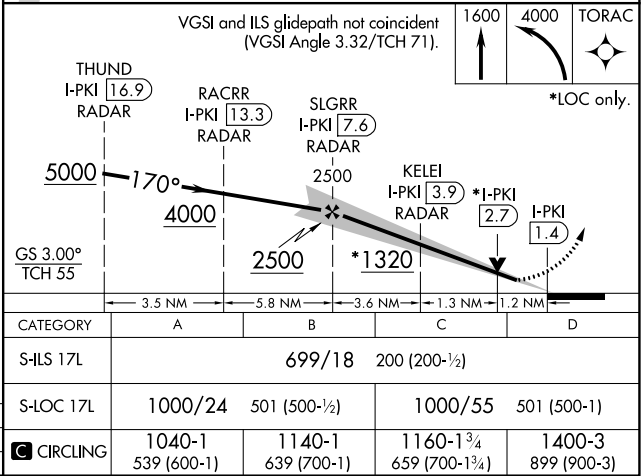
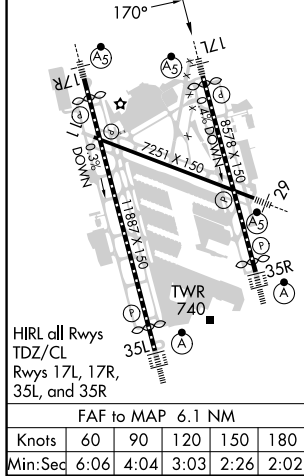
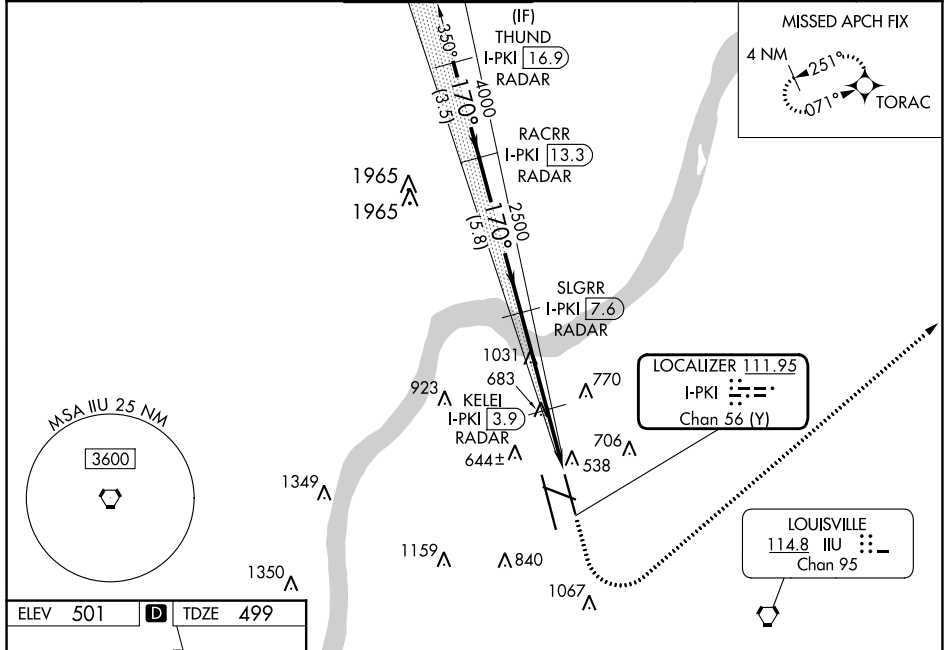
RNAV 1-GPS required.
DME or RADAR required.

⚠ Circling Rwy 11 NA at night. Simultaneous approach authorized.
⚠ For inop ALS, increase S-LOC 17L Cat C/D visibility to 1 3/8 SM.

MALSR 

MISSED APPROACH: Climb to 1600 then climbing left turn to 4000 direct TORAC and hold.

D-ATIS 118.725	LOUISVILLE APP CON 132.075 327.0	LOUISVILLE TOWER 124.2 257.8	GND CON 121.7 348.6	CLNC DEL 126.1 275.8	CPDLC
--------------------------	--	--	-------------------------------	--------------------------------	-------



SE-1, 16 MAY 2024 to 13 JUN 2024

SE-1, 16 MAY 2024 to 13 JUN 2024