

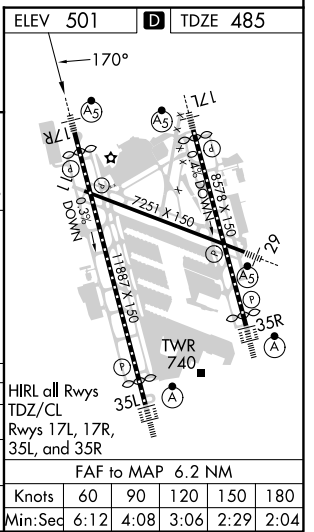
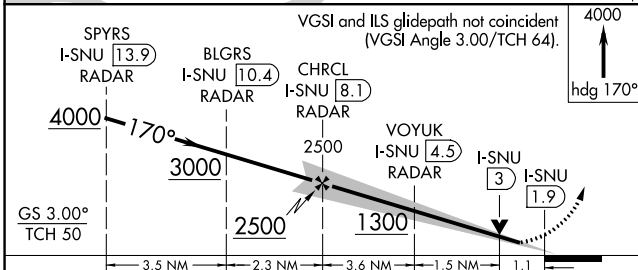
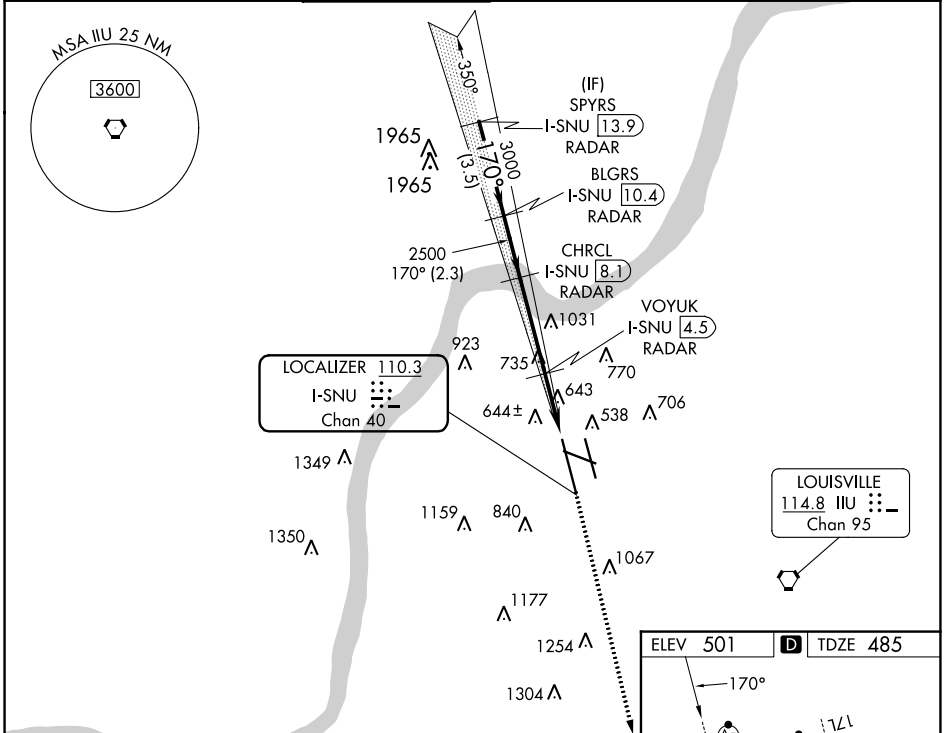
LOC/DME I-SNU 110.3 Chan 40	APP CRS 170°	Rwy Idg 10000 TDZE 485 Apt Elev 501
-------------------------------------------------	------------------------	----------------------------------------------------------------

ILS or LOC RWY 17R

LOUISVILLE MUHAMMAD ALI INTL (SDF)

RADAR required.		MALSR 	MISSED APPROACH: Climb to 4000 on heading 170°, expect RADAR vectors.
Circling Rwy 11 NA at night. Simultaneous approach authorized. For inop ALS, increase S-LOC 17R Cat C/D visibility to RVR 6000.			

D-ATIS 118.725	LOUISVILLE APP CON 132.075 327.0	LOUISVILLE TOWER 124.2 257.8	GND CON 121.7 348.6	CLNC DEL 126.1 275.8	CPDLC
--------------------------	--------------------------------------------	----------------------------------------	-------------------------------	--------------------------------	-------



CATEGORY	A	B	C	D
S-ILS 17R	685/18 200 (200-½)			
S-LOC 17R	900/24	415 (500-½)	900/40	415 (500-¾)
CIRCLING	1040-1 539 (600-1)	1140-1 639 (700-1)	1160-1¾ 659 (700-1¾)	1400-3 899 (900-3)

SE-1, 16 MAY 2024 to 13 JUN 2024

SE-1, 16 MAY 2024 to 13 JUN 2024