

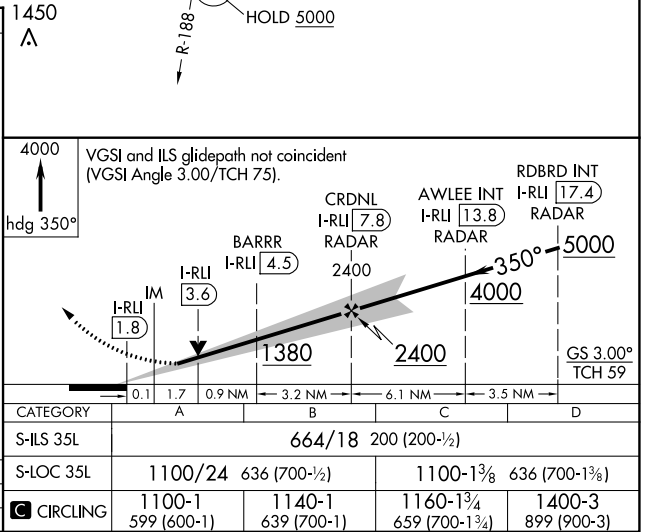
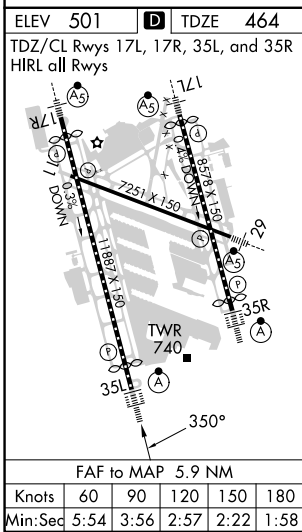
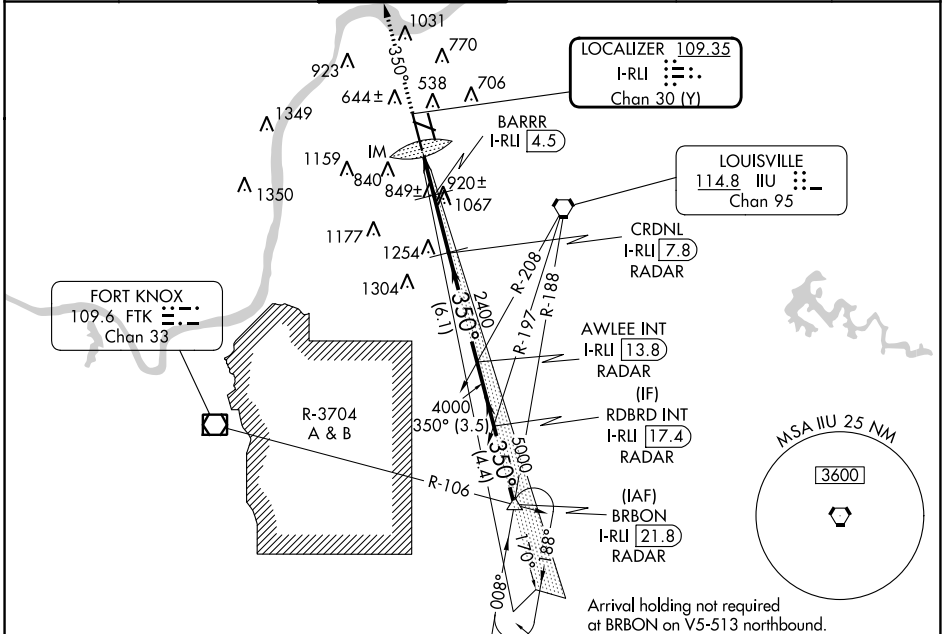
LOC/DME I-RLI 109.35	APP CRS 350°	Rwy Idg TDZE 10000 464
Chan 30 (Y)		Apt Elev 501

ILS or LOC RWY 35L

LOUISVILLE MUHAMMAD ALI INTL (SDF)

DME required for LOC only. RADAR required.		ALSF-2	MISSED APPROACH: Climb to 4000 on heading 350°, expect RADAR vectors.
<p>▼ Circling Rwy 11 NA at night. Simultaneous approach authorized.</p> <p>▲ For inop ALS, increase S-LOC 35L Cat C/D visibility to 1¼ SM.</p>			

D-ATIS 118.725	LOUISVILLE APP CON 132.075 327.0	LOUISVILLE TOWER 124.2 257.8	GND CON 121.7 348.6	CLNC DEL 126.1 275.8	CPDLC
--------------------------	--	--	-------------------------------	--------------------------------	-------



SE-1, 16 MAY 2024 to 13 JUN 2024

SE-1, 16 MAY 2024 to 13 JUN 2024