

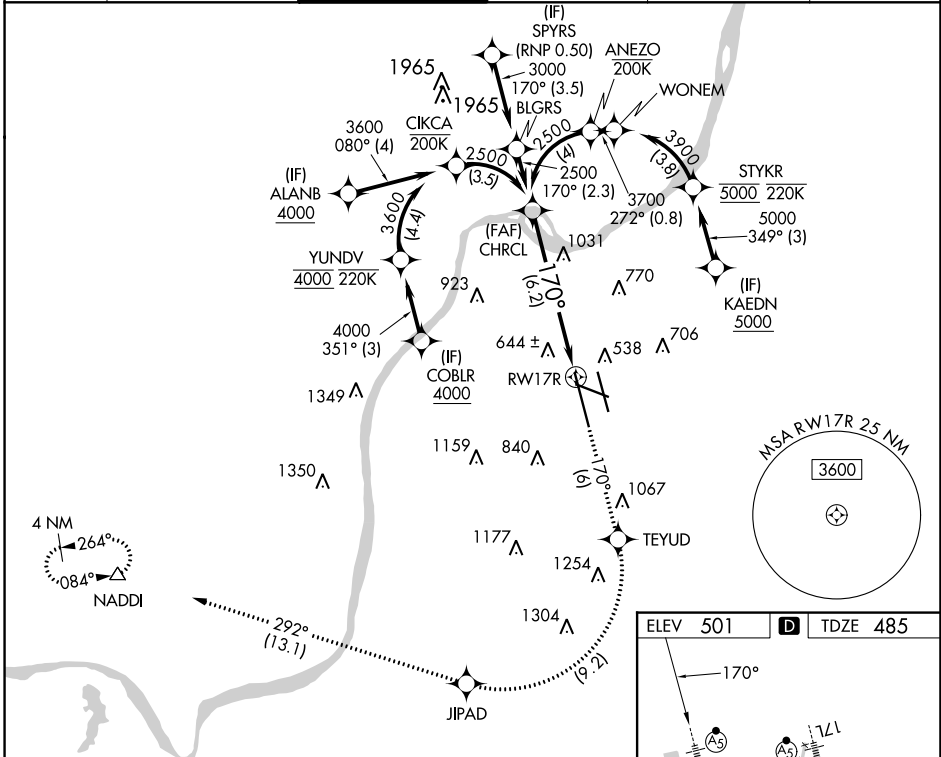
APP CRS	Rwy Idg	10000
	TDZE	485
170°	Apt Elev	501

RNAV (RNP) Z RWY 17R

LOUISVILLE MUHAMMAD ALI INTL (SDF)

RNP AR APCH. RF required.		MALSR	MISSED APPROACH: Climb to 3000 on track 170° to TEYUD right turn to JIPAD and on track 292° to NADDI and hold.
<p>For uncompensated Baro-VNAV systems, procedure NA below -14°C or above 54°C. For inop ALS, increase RNP 0.30 all Cats visibility to 1 3/8 SM. Simultaneous approach authorized, except for arrivals at KAEDN, ALANB, and COBLR.</p>			

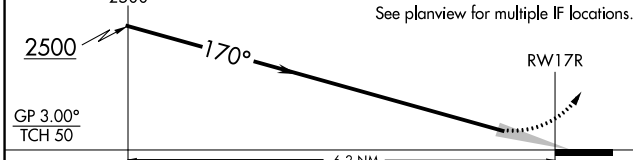
D-ATIS	LOUISVILLE APP CON	LOUISVILLE TOWER	GND CON	CLNC DEL	CPDLC
118.725	132.075 327.0	124.2 257.8	121.7 348.6	126.1 275.8	



SE-1, 16 MAY 2024 to 13 JUN 2024

SE-1, 16 MAY 2024 to 13 JUN 2024

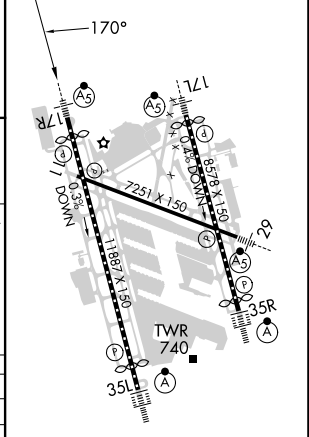
VGSI and RNAV glidepath not coincident (VGSI Angle 3.00/TCH 64).	3000	TEYUD	JIPAD	tr 292°	NADDI
CHRCL	2500	tr 170°			



CATEGORY	A	B	C	D
RNP 0.30 DA	974/60		489 (500-1)	

AUTHORIZATION REQUIRED

ELEV	501	D	TDZE	485
------	-----	---	------	-----



HIRL all Rwys
 TDZ/CL Rwys 17L, 17R, 35L and 35R