

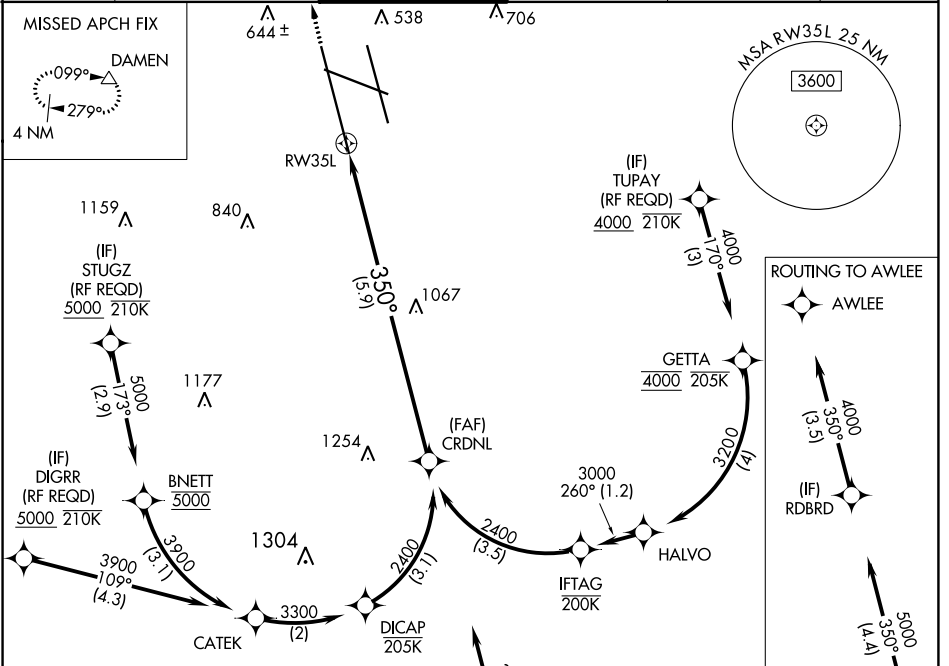
APP CRS	Rwy Idg	10000
350°	TDZE	464
	Apt Elev	501

RNAV (RNP) Z RWY 35L

LOUISVILLE MUHAMMAD ALI INTL (SDF)

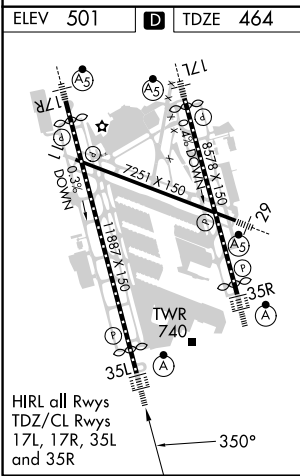
RNP AR APCH.	<p>For uncompensated Baro-VNAV systems, procedure NA below -14°C or above 54°C. Simultaneous approach authorized, except for arrivals at STUGZ, DIGRR, and TUPAY.</p>	ALSF-2 	MISSED APPROACH: Climb to 1000 then climbing left turn to 3000 direct DAMEN and hold.
--------------	---	------------	---

D-ATIS	LOUISVILLE APP CON	LOUISVILLE TOWER	GND CON	CLNC DEL	CPDLC
118.725	132.075 327.0	124.2 257.8	121.7 348.6	126.1 275.8	



SE-1, 16 MAY 2024 to 13 JUN 2024

SE-1, 16 MAY 2024 to 13 JUN 2024



R-3704 A & B

SEE INSET FOR ROUTING TO AWLEE

Procedure NA for arrivals at BRBRD on V5-513 southbound.

DAMEN (5000)
 CRDNL (2400)
 GP 3.00° TCH 59

3000
 1000

5.9 NM

CATEGORY	A	B	C	D
RNP 0.12 DA		874/45	410 (400-%)	
RNP 0.30 DA		914/50	450 (500-1)	

AUTHORIZATION REQUIRED