

# RNAV (RNP) Z RWY 35R

LOUISVILLE MUHAMMAD ALI INTL (SDF)

APP CRS	Rwy Idg	<b>7800</b>
<b>350°</b>	TDZE	<b>480</b>
	Apt Elev	<b>501</b>

**RNP AR APCH.**

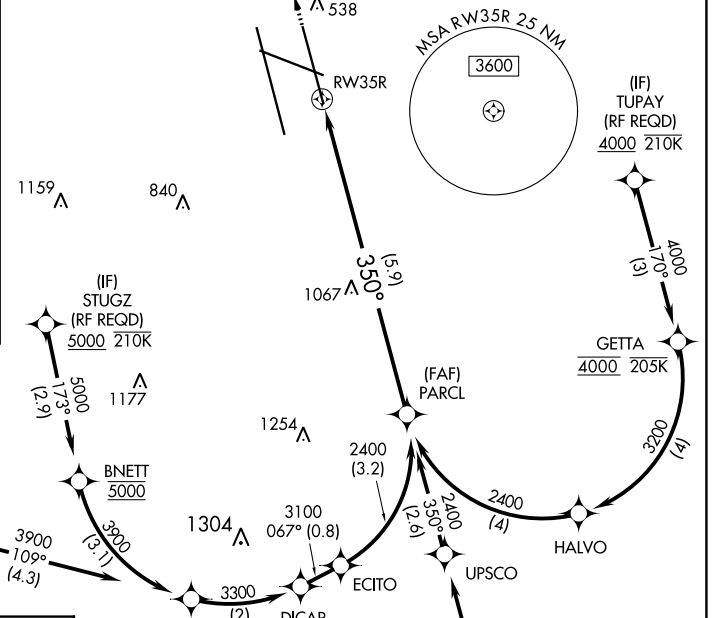
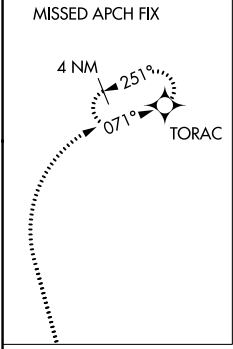
▼ For uncompensated Baro-VNAV systems, procedure NA below -14°C or above 54°C. For inop ALS, increase RNP 0.12 all Cats visibility to RVR 5000 and RNP 0.30 all Cats visibility to 1¼ SM. Simultaneous approach authorized, except for arrivals at DIGRR, TUPAY, and STUGZ.

**ALSF-2**

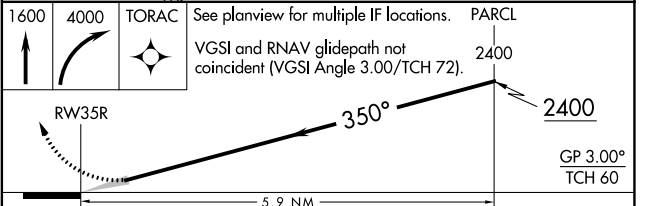
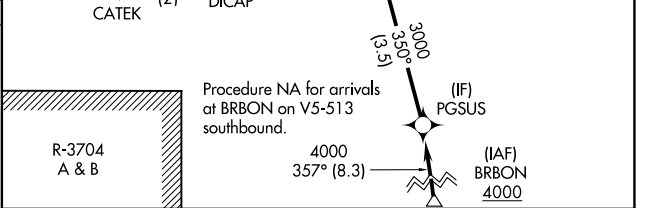
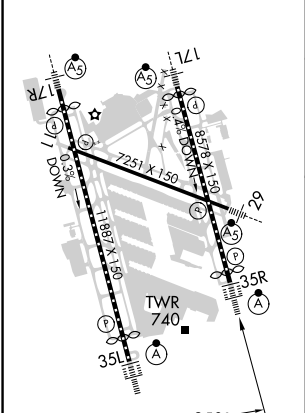
⦿

**MISSED APPROACH:** Climb to 1600 then climbing right turn to 4000 direct TORAC and hold.

D-ATIS	LOUISVILLE APP CON	LOUISVILLE TOWER	GND CON	CLNC DEL	CPDLC
<b>118.725</b>	<b>132.075 327.0</b>	<b>124.2 257.8</b>	<b>121.7 348.6</b>	<b>126.1 275.8</b>	



ELEV	<b>501</b>	TDZE	<b>480</b>
------	------------	------	------------



CATEGORY	A	B	C	D
RNP 0.12 DA		795/26	315 (300-½)	
RNP 0.30 DA		951/55	471 (500-1)	

## AUTHORIZATION REQUIRED

SE-1, 16 MAY 2024 to 13 JUN 2024

SE-1, 16 MAY 2024 to 13 JUN 2024