

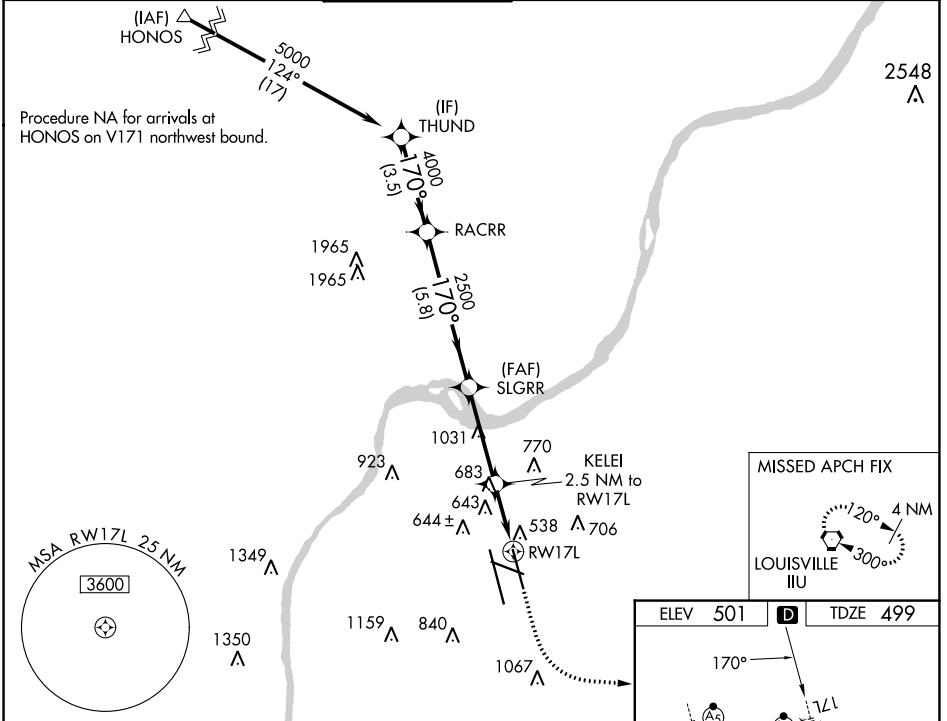
WAAS CH 90101 W17B	APP CRS 170°	Rwy Idg TDZE Apt Elev	7800 499 501
----------------------------------------	------------------------	-----------------------------	-----------------------------------------

RNAV (GPS) Y RWY 17L

LOUISVILLE MUHAMMAD ALI INTL (SDF)

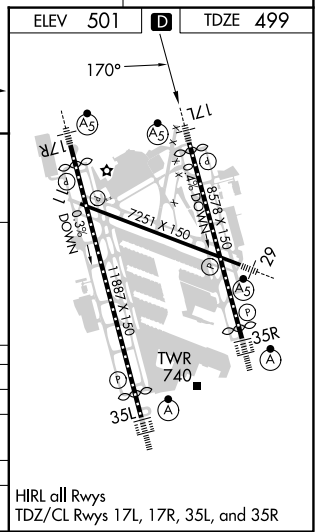
RNP APCH - GPS.		MALSRS	MISSED APPROACH: Climb to 1000 then climbing left turn to 3000 direct IIL VORTAC and hold, continue climb-in-hold to 3000.
<p>▼ Circling Rwy 11 NA at night. Simultaneous approach authorized. For uncompensated Baro-VNAV systems, LNAV/VNAV NA below -13°C or above 54°C. LNAV procedure NA during simultaneous operations. Use of FD or AP required during simultaneous operations. For inop ALS, increase LNAV/VNAV all Cats visibility to RVR 6000.</p>			

D-ATIS 118.725	LOUISVILLE APP CON 132.075 327.0	LOUISVILLE TOWER 124.2 257.8	GND CON 121.7 348.6	CLNC DEL 126.1 275.8	CPDLC
--------------------------	--------------------------------------------	----------------------------------------	-------------------------------	--------------------------------	-------



VGSI and RNAV glidepath not coincident (VGSI Angle 3.32/TCH 71).

THUND	RACRR	SLGRR	KELEI	IIL
5000	4000	2500	2.5 NM to RWY 17L	1000 3000 IIL
GP 3.00° TCH 55	170°	1320	1 NM to RWY 17L	
3.5 NM		5.8 NM		3.6 NM
A		B		C
LPV DA	699/18		200 (200-½)	
LNAV/VNAV DA	909/40		410 (500-¾)	
LNAV MDA	920/24	421 (500-½)	920/40	421 (500-¾)
CIRCLING	1040-1 539 (600-1)	1140-1 639 (700-1)	1160-1¾ 659 (700-1¾)	1400-3 899 (900-3)



SE-1, 16 MAY 2024 to 13 JUN 2024

SE-1, 16 MAY 2024 to 13 JUN 2024