

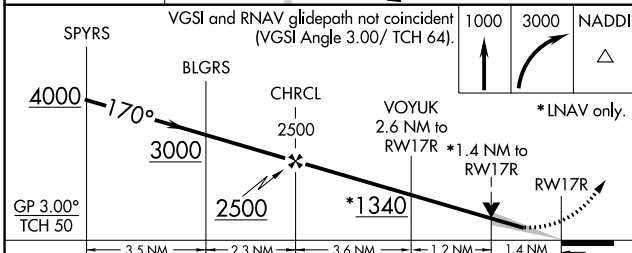
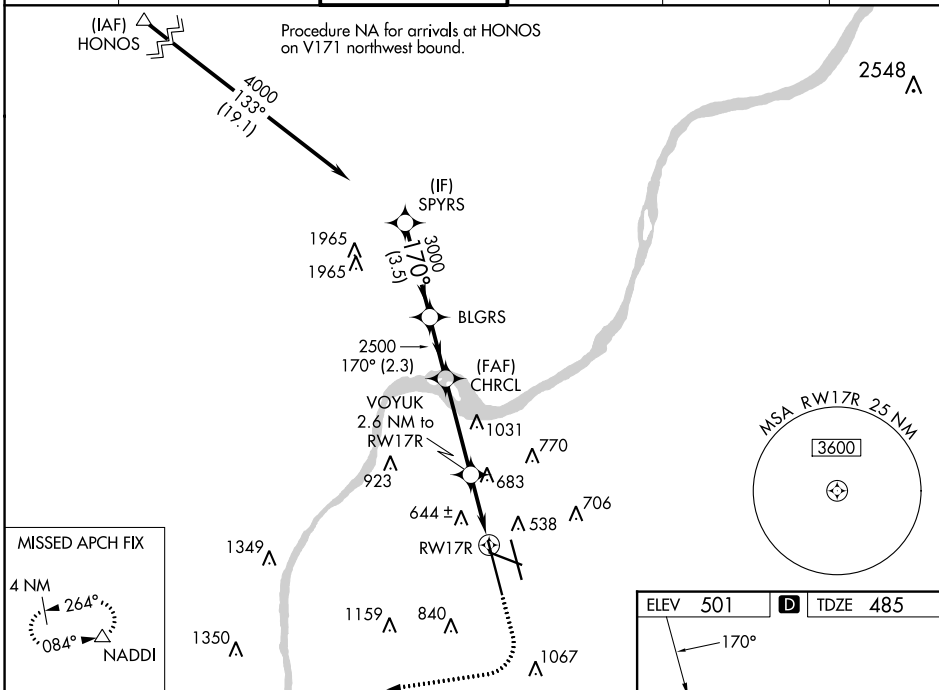
WAAS CH 57909 W17A	APP CRS 170°	Rwy ldg 10000 TDZE 485 Apt Elev 501
--	------------------------	--

RNAV (GPS) Y RWY 17R

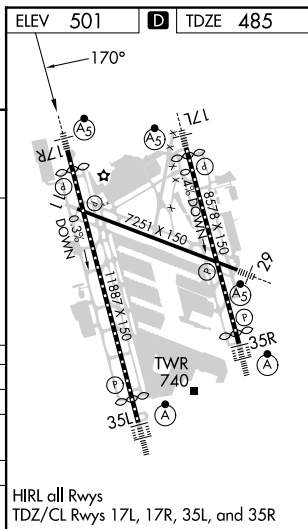
LOUISVILLE MUHAMMAD ALI INTL (SDF)

RNP APCH.	MALSR	MISSED APPROACH: Climb to 1000 then climbing right turn to 3000 direct NADDI and hold.
Circling Rwy 11 NA at night. Simultaneous approach authorized. LNAV procedure NA during simultaneous operations. For uncompensated Baro-VNAV systems, LNAV/VNAV NA below -14°C or above 54°C. Use of FD or AP required during simultaneous operations. For inop ALS, increase LNAV Cats C/D visibility to 1½ SM.		

D-ATIS 118.725	LOUISVILLE APP CON 132.075 327.0	LOUISVILLE TOWER 124.2 257.8	GND CON 121.7 348.6	CLNC DEL 126.1 275.8	CPDLC
--------------------------	--	--	-------------------------------	--------------------------------	-------



CATEGORY	A	B	C	D
LPV DA		685/18	200 (200-½)	
LNAV/VNAV DA		932/55	447 (500-1)	
LNAV MDA	1000/24	515 (500-½)	1000/55	515 (500-1)
CIRCLING	1040-1 539 (600-1)	1140-1 639 (700-1)	1160-1¾ 659 (700-1¾)	1400-3 899 (900-3)



SE-1, 16 MAY 2024 to 13 JUN 2024

SE-1, 16 MAY 2024 to 13 JUN 2024