

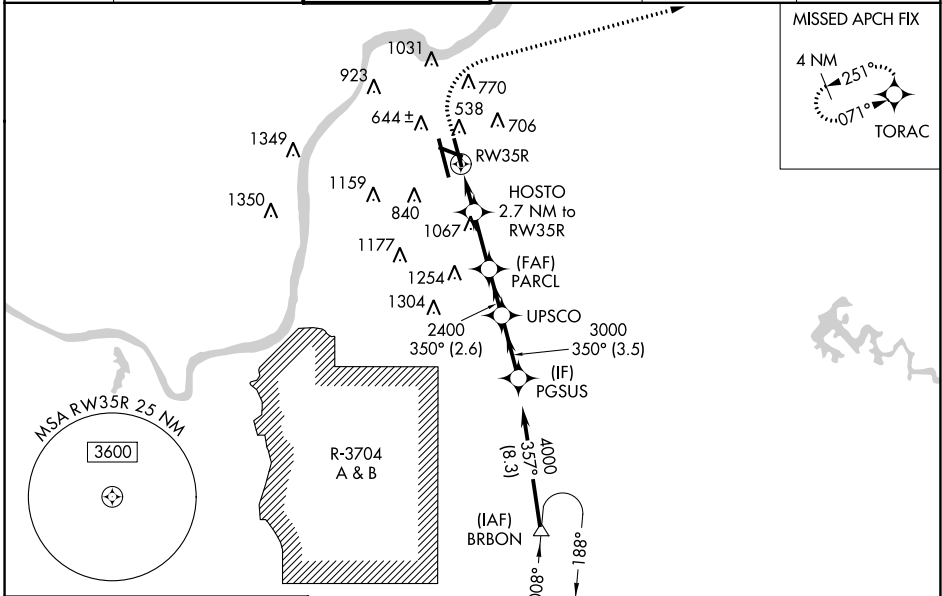
WAAS CH <b>70709</b> <b>W35D</b>	APP CRS <b>350°</b>	Rwy ldg TDZE <b>480</b> Apt Elev <b>501</b>
--	------------------------	---

# RNAV (GPS) Y RWY 35R

LOUISVILLE MUHAMMAD ALI INTL (SDF)

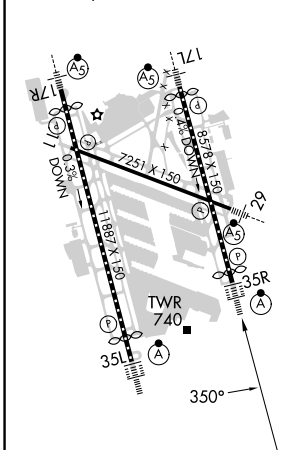
RNP APCH.		ALSIF-2	MISSED APPROACH: Climb to 1600 then climbing right turn to 4000 direct TORAC and hold.
<p><b>▽</b> Circling Rwy 11 NA at night. Simultaneous approach authorized. LNAV procedure NA during simultaneous operations. Use of FD or AP required during simultaneous operations. For uncompensated Baro-VNAV systems, LNAV/VNAV NA below -1.4°C or above 54°C. For inop ALS, increase LNAV/VNAV all Cats visibility to 1½ SM.</p>			

D-ATIS <b>118.725</b>	LOUISVILLE APP CON <b>132.075 327.0</b>	LOUISVILLE TOWER <b>124.2 257.8</b>	GND CON <b>121.7 348.6</b>	CLNC DEL <b>126.1 275.8</b>	CPDLC
--------------------------	--	--	-------------------------------	--------------------------------	-------



ELEV 501	<b>D</b>	TDZE 480
----------	----------	----------

HIRL all Rwys  
TDZ/CL Rwys 17L, 17R, 35L, and 35R



1600	4000	TORAC	VGSi and RNAV glidepath not coincident (VGSi Angle 3.00/TCH 72).				
*LNAV only.		*1.4 NM to RW35R		*1360		PGSUS	
*2.7 NM to RW35R		*3.2 NM		*2.6 NM		4000	
1.4		1.3 NM		3.5 NM		GP 3.00° TCH 60	
CATEGORY	A		B		C		D
LPV DA	680/18		200 (200-½)				
LNAV/VNAV DA	909/50		429 (500-1)				
LNAV MDA	1000/24		520 (500-½)		1000/55		520 (500-1)
<b>C</b> CIRCLING	1040-1 539 (600-1)		1140-1 639 (700-1)		1160-1¾ 659 (700-1¾)		1400-3 899 (900-3)

SE-1, 16 MAY 2024 to 13 JUN 2024

SE-1, 16 MAY 2024 to 13 JUN 2024