

TOP ALTITUDE:
3000

ASOS 119.925
 CLNC DEL 121.8 257.65
 132.075 269.075 (When twr closed)
 GND CON 121.8 257.65
 MARTINSBURG TOWER ★ 124.3 (CTAF) 233.7
 POTOMAC DEP CON 126.825 239.025

▼ DEPARTURE ROUTE DESCRIPTION

Climb on heading assigned by ATC, expect RADAR vectors to BUTRZ, then on track 239° to CLTCH, thence

. . . . on assigned transition, maintain altitude assigned by ATC, expect clearance to filed altitude within ten (10) minutes after departure.

FLASK TRANSITION (CLTCH3.FLASK)
 MAULS TRANSITION (CLTCH3.MAULS)

NOTE: RNAV 1.

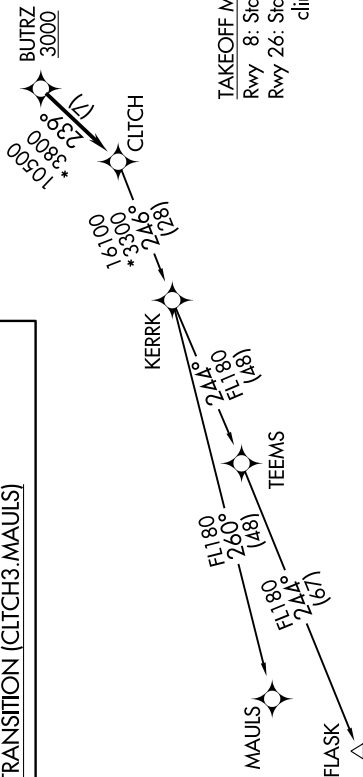
NOTE: RADAR required.

NOTE: DME/DME/IRU or GPS required.

NOTE: Turbo-jets only.

NOTE: Takeoff Rwy 8: If issued an ATC heading that requires a westbound turn, climb heading 081° to 1200 prior to turning for obstacle avoidance.

NOTE: Takeoff Rwy 26: If issued an ATC heading that requires a right turn, climb heading 261° to 2400 prior to turning for obstacle avoidance.



TAKEOFF MINIMUMS
 Rwy 8: Standard.
 Rwy 26: Standard with a minimum
 climb of 225' per NM to 2100.

NOTE: Chart not to scale.