

# HI-TACAN RWY 25

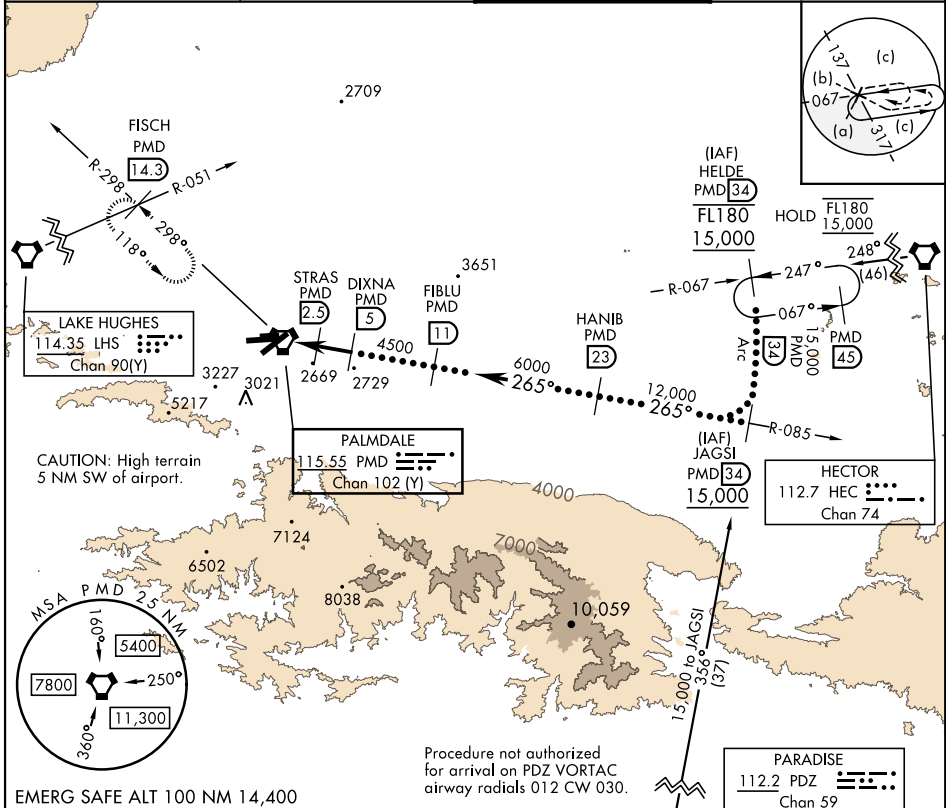
TACAN PMD Chan <b>102 (Y)</b>	APCH CRS <b>265°</b>	Rwy Idg TDZE Arprt Elev <b>12,002</b> <b>2503</b> <b>2543</b>
----------------------------------	-------------------------	--

AL-310 [USAF]

PALMDALE USAF PLANT 42 (KPMD)

**▽** \* Circling NA S of Rwy 4 and 25.  
**▲** MISSED APPROACH: Climb to 3000 then climbing right turn to 6700 on heading 318° on PMD VORTAC R-298 to FISCH INT/PMD 14.3 DME/RADAR and hold, continue climb-in-hold to 6700.

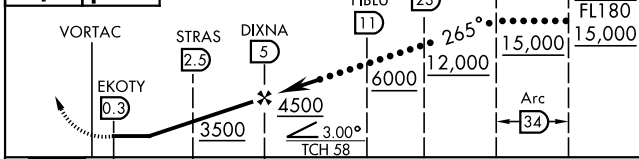
ATIS <b>118.275</b>	JOSHUA APP CON <b>124.55 363.0</b>	TOWER★ <b>123.7 (CTAF) 0 317.6</b>	GND CON <b>121.9 317.6</b>
------------------------	---------------------------------------	---------------------------------------	-------------------------------



SW-3, 16 MAY 2024 to 13 JUN 2024

SW-3, 16 MAY 2024 to 13 JUN 2024

EMERG SAFE ALT 100 NM 14,400  
 Procedure not authorized for arrival on PDZ VORTAC airway radials 012 CW 030.  
 VGS1 and descent angles not coincident.



CATEGORY	C	D	E
S-25	2840-1	337 (400-1)	
CIRCLING*	3140-1½ 597 (600-1½)	3740-3 1197 (1200-3)	3760-3 1217 (1300-3)

ELEV 2543	TDZE 2503
-----------	-----------

ASSAULT STRIP  
 072° 252°  
 0.3% UP 6,000 x 75  
 12,002 x 200  
 TWR 2626  
 2699  
 2640  
 HIRL Rwy 4-22, 7-25 0  
 REIL Rwy 4, 22, 7, 25 0

# HI-TACAN RWY 25