

LOC I-PMD <b>110.7</b>	APP CRS <b>254°</b>	Rwy Idg TDZE Apt Elev	<b>12002</b> <b>2503</b> <b>2543</b>
---------------------------	------------------------	-----------------------------	--

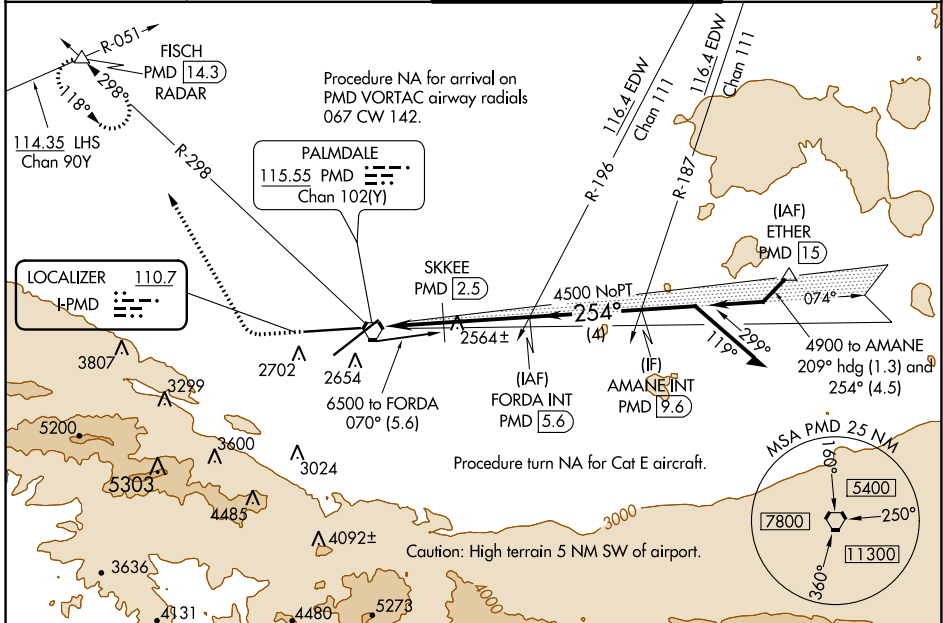
# ILS or LOC RWY 25

PALMDALE USAF PLANT 42 (PMD)

**▽** DME from PMD VORTAC.  
**△** Simultaneous reception of I-PMD and PMD DME required.  
 Circling NA for Cats C, D, and E south of Rwy 4 and 25.

MISSED APPROACH: Climb to 3000 then climbing right turn to 6700 on heading 318° and on PMD VORTAC R-298 to FISCH INT/PMD 14.3 DME/RADAR and hold, continue climb-in-hold to 6700.

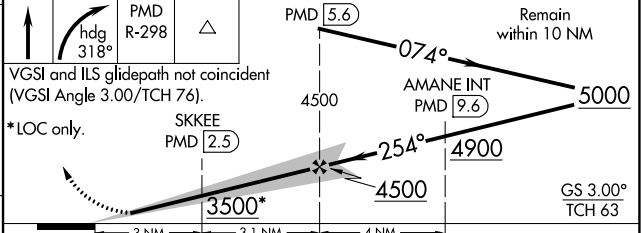
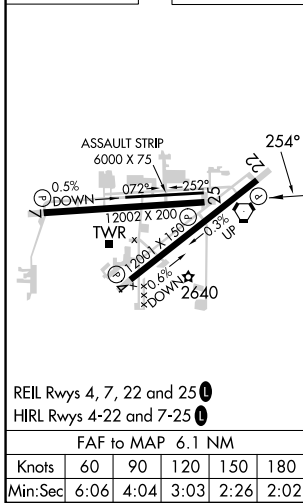
ATIS <b>118.275</b>	JOSHUA APP CON <b>124.55 363.0</b>	<b>PALMDALE TOWER *</b> <b>123.7 (CTAF) 0 317.6</b>	GND CON <b>121.9 317.6</b>
------------------------	---------------------------------------	--	-------------------------------



SW-3, 16 MAY 2024 to 13 JUN 2024

SW-3, 16 MAY 2024 to 13 JUN 2024

ELEV 2543	TDZE 2503	3000	6700	FISCH	FORDA INT PMD 5.6
-----------	-----------	------	------	-------	-------------------



CATEGORY	A	B	C	D	E
S-ILS 25	2703-¾ 200 (200-¾)				
S-LOC 25	3500-1¼ 997 (1000-1¼)	3500-1½ 997 (1000-1½)	3500-3	3740-3	3760-3
<b>C</b> CIRCLING	3500-1¼ 957 (1000-1¼)	3500-1½ 957 (1000-1½)	3500-3 957 (1000-3)	3740-3 1197 (1200-3)	3760-3 217 (1300-3)
SKKEE FIX MINIMUMS (DME REQUIRED)					
S-LOC 25	2820-1	317 (300-1)	2820-¾	317 (300-¾)	
<b>C</b> CIRCLING	3020-1 477 (500-1)	3060-1 517 (600-1)	3140-1½ 597 (600-1½)	3740-3 1197 (1200-3)	3760-3 217 (1300-3)