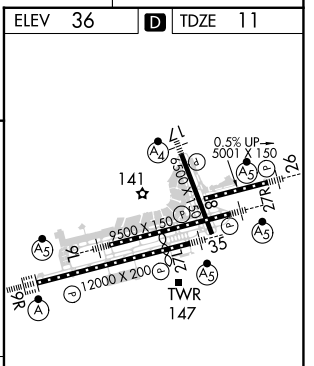
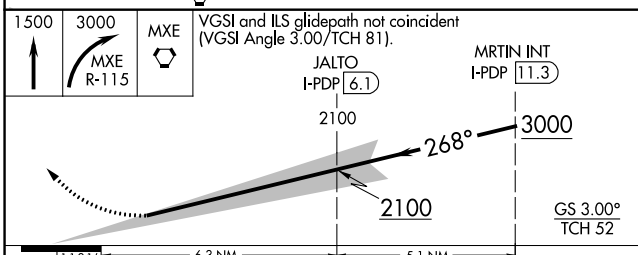
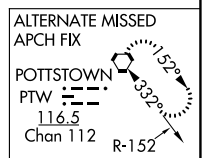
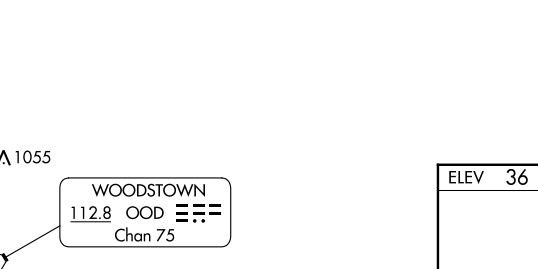
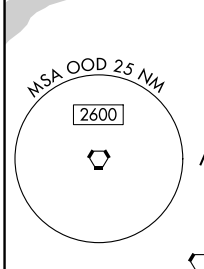
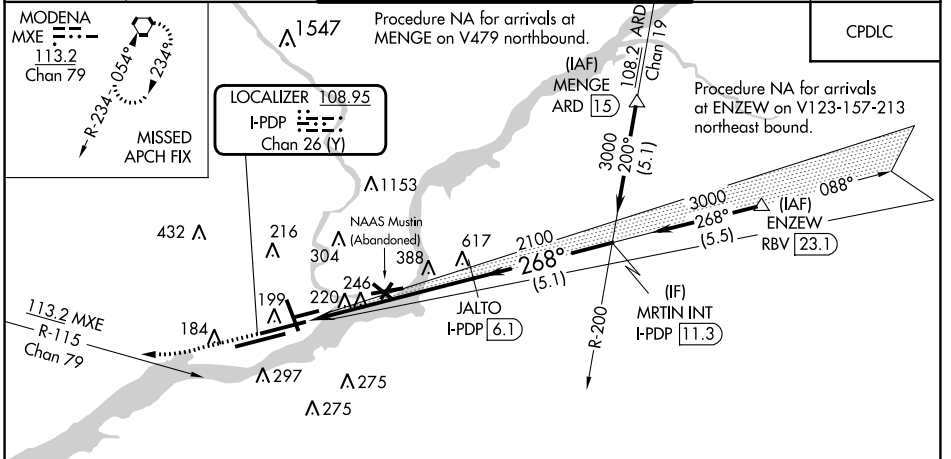


LOC/DME I-PDP 108.95 Chan 26 (Y)	APP CRS 268°	Rwy Idg 8864 TDZE 11 Apt Elev 36
---	------------------------	---

ILS RWY 27R (SA CAT I & II)

PHILADELPHIA INTL (PHL)

DME required.		MALSR	MISSED APPROACH: Climb to 1500 then climbing right turn to 3000 on MXE VORTAC R-115 to MXE VORTAC and hold.	
▼ SA CAT I: Requires specific OPSPEC, MSPEC or LOA approval and use of HUD to DH. SA CAT II: Reduced lighting: requires specific OPSPEC, MSPEC or LOA approval and use of autoland or HUD to touchdown.				
D-ATIS ARR 133.4 DEP 135.925	PHILADELPHIA APP CON 124.35 319.15	PHILADELPHIA TOWER 118.5 327.05 (Rwys 9L/27R, 8/26 and 17/35) 135.1 327.05 (Rwy 9R/27L)	GND CON 121.9 348.6	CLNC DEL 118.85 348.6



CATEGORY	A	B	C	D
S-ILS 27R	SA CAT I RA 157/14 150 DA 161			
S-ILS 27R	SA CAT II RA 102/12 100 DA 111			

TDZ/CL Rwy 9R
HIRL all Rwys
REIL Rwys 9L and 35

SA CATEGORY I & II ILS - SPECIAL AIRCREW & AIRCRAFT CERTIFICATION REQUIRED

NE-4, 16 MAY 2024 to 13 JUN 2024

NE-4, 16 MAY 2024 to 13 JUN 2024