

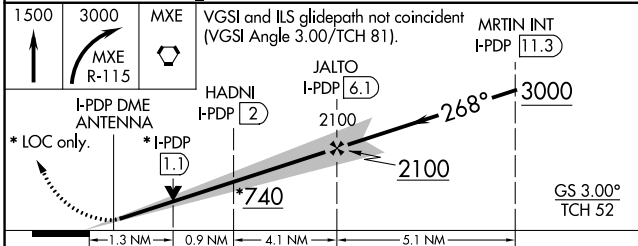
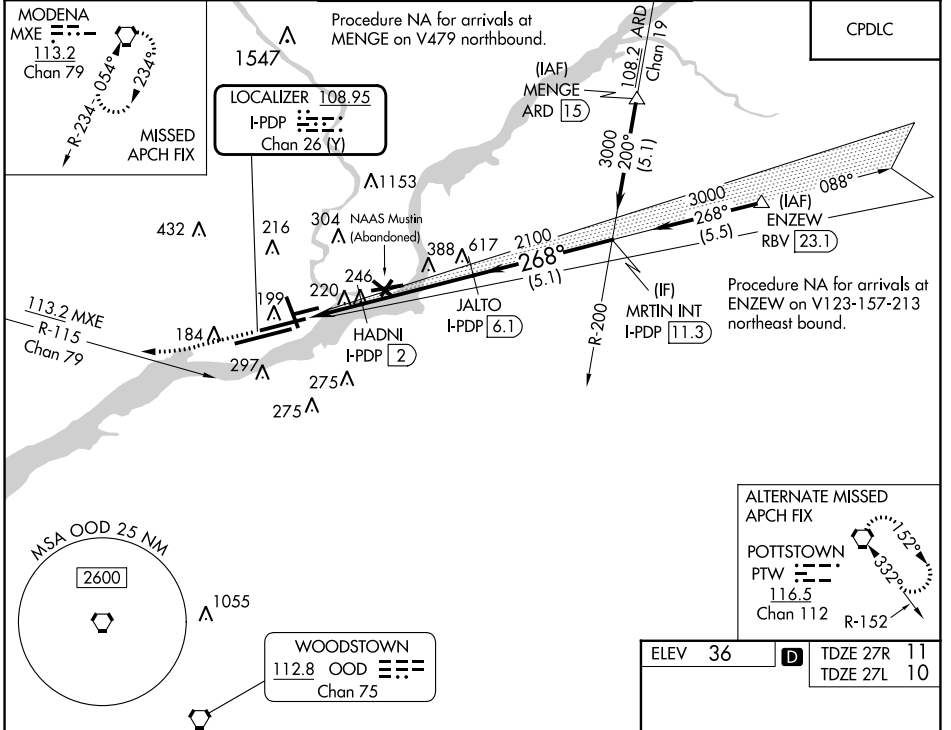
# ILS or LOC RWY 27R

PHILADELPHIA INTL (PHL)

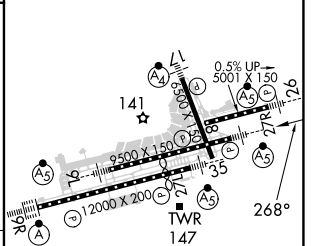
LOC/DME I-PDP <b>108.95</b> Chan 26 (Y)	APP CRS <b>268°</b>	Rwy Idg 27R 27L	TDZE <b>8864</b> <b>11</b> <b>10</b>	9912 <b>36</b> <b>36</b>
DME required.		27R MALSR 27L MALSR MISSED APPROACH: Climb to 1500 then climbing right turn to 3000 on MXE VORTAC R-115 to MXE VORTAC and hold.		

For inop ALS, increase S-LOC 27R Cat C/D visibility to 1 3/8 SM. **RVR 1800 authorized with the use of FD or AP or HUD to DA.	D-ATIS ARR <b>133.4</b> DEP <b>135.925</b>	PHILADELPHIA APP CON <b>124.35 319.15</b>	PHILADELPHIA TOWER <b>118.5 327.05</b> (Rwys 9L/27R, 8/26 and 17/35) <b>135.1 327.05</b> (Rwy 9R/27L)	GND CON <b>121.9 348.6</b>	CLNC DEL <b>118.85 348.6</b>
--	--	--	---	-------------------------------	---------------------------------

MODENA MXE 113.2 Chan 79	Procedure NA for arrivals at MENGE on V479 northbound.	CPDLC
-----------------------------------	--	-------



ELEV 36	TDZE 27R 11
	TDZE 27L 10



CATEGORY	A	B	C	D
S-ILS 27R **	211/24 200 (200-1/2)			
S-LOC 27R	500/24	489 (500-1/2)	500/50	489 (500-1)
SIDESTEP 27L	500-1	491 (500-1)	500-1 3/8	491 (500-1 3/8)
CIRCLING	540-1 504 (600-1)	600-1 564 (600-1)	620-1 1/2 584 (600-1 1/2)	720-2 1/4 684 (700-2 1/4)

TDZ/CL Rwy 9R  
HIRL all Rwys  
REIL Rwys 9L and 35

NE-4, 16 MAY 2024 to 13 JUN 2024

NE-4, 16 MAY 2024 to 13 JUN 2024