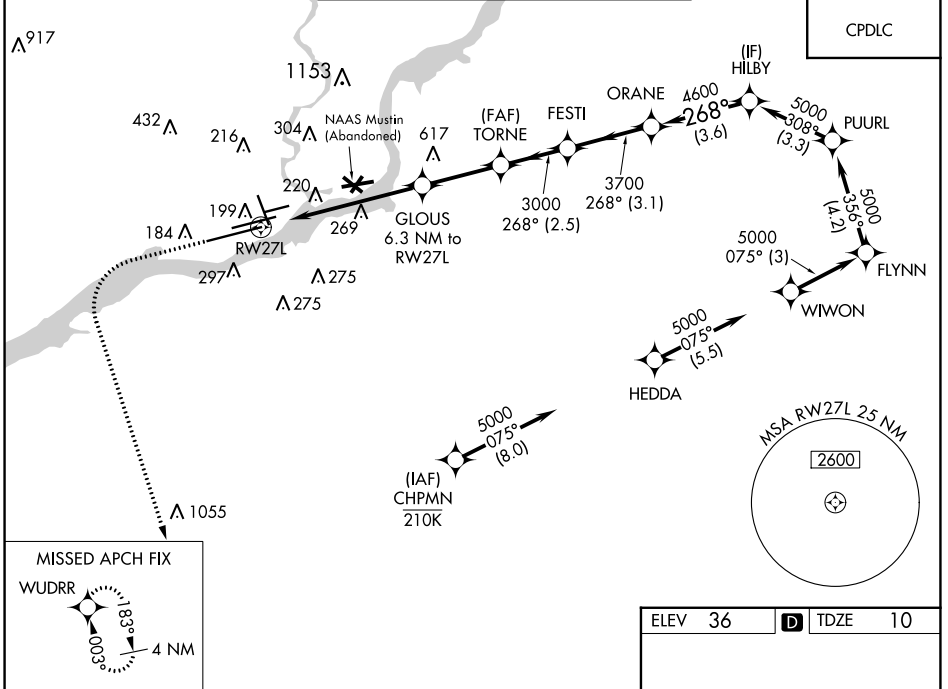


WAAS CH 97322	APP CRS 268°	Rwy Idg TDZE Apt Elev	9912 10 36
-------------------------	------------------------	-----------------------------	---------------------------------------

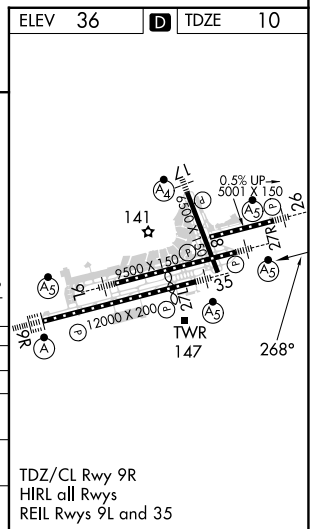
RNAV (GPS) RWY 27L

PHILADELPHIA INTL (PHL)

RNP APCH - GPS.		MALSR	MISSED APPROACH: Climb to 500 then climbing left turn to 3000 direct WUDRR and hold.		
<p>▽ For uncompensated Baro-VNAV systems, LNAV/VNAV NA below -11°C or above 54°C. For inop ALS, increase LNAV/VNAV all Cats visibility to RVR 6000. * RVR 1800 authorized with use of FD or AP or HUD to DA.</p>					
D-ATIS ARR 133.4 DEP 135.925	PHILADELPHIA APP CON 124.35 319.15	PHILADELPHIA TOWER 118.5 327.05 (Rwys 9L/27R, 8/26 and 17/35) 135.1 327.05 (Rwy 9R/27L)		GND CON 121.9 348.6	CLNC DEL 118.85 348.6



MISSED APCH FIX WUDRR				
<p>500 3000 WUDRR</p> <p>VGSI and RNAV glidepath not coincident (VGSI Angle 3.00/TCH 73).</p>				
		<p>ORANE HILBY</p> <p>5000</p> <p>268°</p> <p>4600</p> <p>3700</p> <p>3000</p> <p>2060</p> <p>3000</p> <p>GP 3.00° TCH 57</p>		
RWY 27L		<p>1.4 NM to RWY 27L</p>		
1.4 NM		4.9 NM		
2.9 NM		2.5 NM		
3.1 NM		3.6 NM		
CATEGORY	A	B	C	D
LPV DA*	210/24		200 (200-1/2)	
LNAV/DA VNAV	422/40		412 (400-3/4)	
LNAV MDA	540/24	530 (600-1/2)	540/55	530 (600-1)
CIRCLING	540-1 504 (600-1)	600-1 564 (600-1)	620-1 1/2 584 (600-1 1/2)	720-2 1/4 684 (700-2 1/4)



NE-4, 16 MAY 2024 to 13 JUN 2024

NE-4, 16 MAY 2024 to 13 JUN 2024