

WAAS CH <b>45523</b> <b>W09B</b>	APP CRS <b>087°</b>	Rwy Idg TDZE <b>13</b> Apt Elev <b>36</b>	<b>9500</b>
--	------------------------	---	-------------

# RNAV (GPS) Y RWY 9L

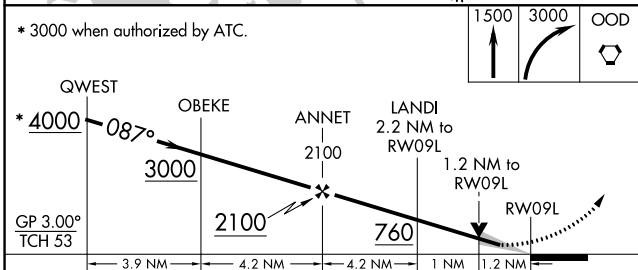
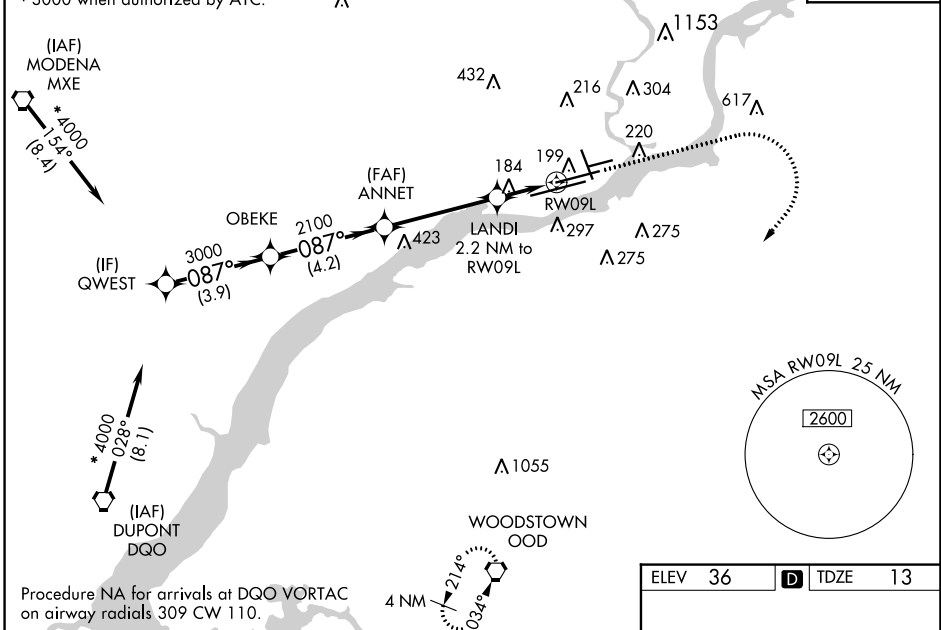
PHILADELPHIA INTL (PHL)

RNP APCH - GPS.		MALSR	MISSED APPROACH: Climb to 1500, then climbing right turn to 3000 direct OOD VORTAC and hold.
<p>▼ For uncompensated Baro-VNAV systems, LNAV/VNAV NA below -12°C or above 54°C. For inop ALS, increase LNAV/VNAV visibility to RVR 4500, all Cats. # RVR 1800 authorized with use of FD or AP or HUD to DA.</p>			

D-ATIS ARR <b>133.4</b> DEP <b>135.925</b>	PHILADELPHIA APP CON <b>124.35 319.15</b>	PHILADELPHIA TOWER <b>118.5 327.05</b> (Rwys 9L/27R, 8/26 and 17/35) <b>135.1 327.05</b> (Rwy 9R/27L)	GND CON <b>121.9 348.6</b>	CLNC DEL <b>118.85 348.6</b>
--	--	---	-------------------------------	---------------------------------

Procedure NA for arrivals at MXE VORTAC on airway radials 129 CW 177.  
\* 3000 when authorized by ATC.

CPDLC



ELEV 36	TDZE 13
---------	---------

TDZ/CL Rwy 9R  
HIRL all Rwys  
REIL Rwys 9L and 35

CATEGORY	A	B	C	D
LPV DA #	213/24		200 (200-½)	
LNAV/VNAV DA	325/24		312 (300-½)	
LNAV MDA	440/24 427 (500-½)		440/40 427 (500-¾)	
CIRCLING	540-1 504 (600-1)	600-1 564 (600-1)	620-1½ 584 (600-1½)	720-2¼ 684 (700-2¼)

NE-4, 16 MAY 2024 to 13 JUN 2024

NE-4, 16 MAY 2024 to 13 JUN 2024