

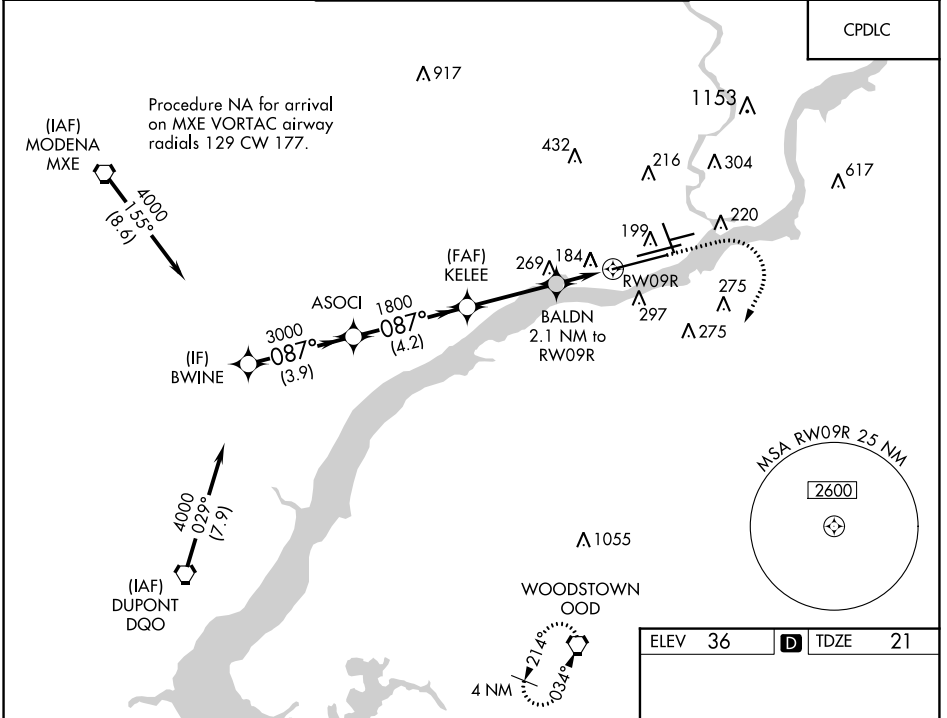
WAAS CH <b>40023</b> <b>W09A</b>	APP CRS <b>087°</b>	Rwy Idg TDZE <b>21</b> Apt Elev <b>36</b>	<b>12000</b>
--	------------------------	---	--------------

# RNAV (GPS) Y RWY 9R

PHILADELPHIA INTL (PHL)

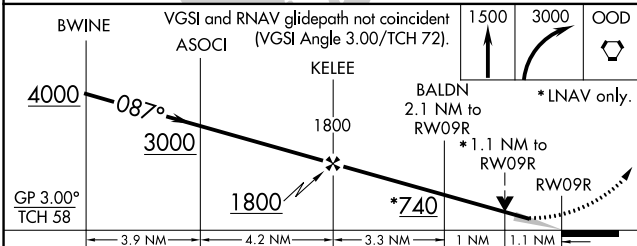
<p>▼ For uncompensated Baro-VNAV systems, LNAV/VNAV NA below -12°C (11°F) or above 54°C (130°F). DME/DME RNP-0.3 NA. ▲ For inop ALS, increase LNAV/VNAV visibility all Cats to RVR 5000 and LNAV Cats C/D visibility to RVR 6000.</p>	<p>ALSF-2 A</p>	<p>MISSED APPROACH: Climb to 1500 then climbing right turn to 3000 direct OOD VORTAC and hold.</p>
---	---------------------	--

D-ATIS ARR <b>133.4</b> DEP <b>135.925</b>	PHILADELPHIA APP CON <b>124.35 319.15</b>	PHILADELPHIA TOWER <b>118.5 327.05</b> (Rwys 9L/27R, 8/26 and 17/35) <b>135.1 327.05</b> (Rwy 9R/27L)	GND CON <b>121.9 348.6</b>	CLNC DEL <b>118.85 348.6</b>
--	--	---	-------------------------------	---------------------------------



NE-4, 16 MAY 2024 to 13 JUN 2024

NE-4, 16 MAY 2024 to 13 JUN 2024



ELEV <b>36</b>	<b>D</b> TDZE <b>21</b>
----------------	-------------------------

CATEGORY	A	B	C	D
LPV DA		221/18	200 (200-½)	
LNAV/VNAV DA		346/30	325 (400-¾)	
LNAV MDA	440/24	419 (500-½)	440/40	419 (500-¾)
CIRCLING	540-1	640-1	640-1¾	720-2¼
	504 (600-1)	604 (700-1)	604 (700-1¾)	684 (700-2¼)

