

ARLIN FOUR ARRIVAL

AL-322 (FAA)

PHOENIX, ARIZONA

SW-4, 16 MAY 2024 to 13 JUN 2024

ARRIVAL ROUTE DESCRIPTION

BLYTE TRANSITION (BLH.ARLIN4): From over BLH VORTAC on BLH R-089 and IWA R-256 to ARLIN INT. Thence. . . .

MOHAK TRANSITION (MOHAK.ARLIN4): From over MOHAK INT on GBN R-247 and BXK R-215 to HYDRR INT, then on IWA R-256 to ARLIN INT. Thence. . . .

PHOENIX SKY HARBOR INTL: Rwy 7L/R or 8: From over ARLIN, Expect vectors to final approach course; Rwy 25L/R or 26: From over ARLIN, on IWA R-256 to TUKEE. Expect vectors to final approach course prior to TUKEE.

SATELLITE AIRPORTS: Expect vectors after passing SCOLE or JUDTH.

LOST COMMUNICATIONS: After ARLIN, on IWA R-256 and PXR R-143 to PXR VORTAC.

NOTE: BLYTHE Transition for turbojet aircraft FL240 and above.
Turboprop aircraft plan BLYTHE ARRIVAL at or below FL230.

NOTE: MOHAK Transition for turbojet and turboprop aircraft.

NOTE: Turboprops landing KPHX expect vectors after passing SCOLE or JUDTH.

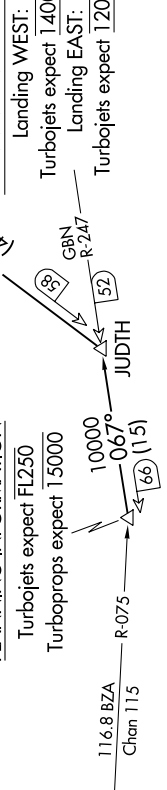
SCOLE

VERTICAL NAVIGATION PLANNING INFORMATION

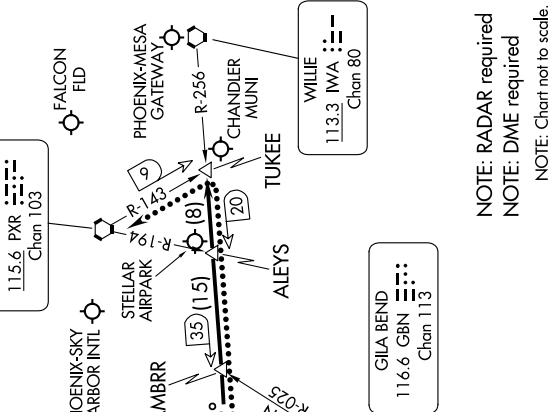


MOHAK

VERTICAL NAVIGATION PLANNING INFORMATION



- PHOENIX APP CON 124.1 256.9
- PHOENIX TOWER 118.7 278.8 (Rwy 8-26)
- 120.9 254.3 (Rwy 7L-23R, 7R-25L)
- PHOENIX GND CON 119.75 269.2
- CHD ATIS 128.325
- FFZ ATIS 118.25
- DVT ATIS 126.5
- IWA ATIS 133.5 270.275
- PHX D-ATIS 127.575
- SDL ATIS 118.6
- PHOENIX-DEER VALLEY
- SCOTTSDALE
- PHOENIX PXR 115.6 PXR Chan 103
- PHOENIX-SKY HARBOR INTL
- FALCON FLD
- PHOENIX-MESA GATEWAY
- CHANDLER MUNI
- TUKEE
- WILIE 113.3 IWA Chan 80
- GILA BEND 116.6 GBN Chan 113



NOTE: RADAR required
NOTE: DME required
NOTE: Chart not to scale.

ARLIN FOUR ARRIVAL

PHOENIX, ARIZONA

SW-4, 16 MAY 2024 to 13 JUN 2024