

# ALLEGHENY NINE DEPARTURE

**TOP ALTITUDE:  
3000**

ATIS  
120.55  
GND CON  
121.7  
ALLEGHENY TOWER  
121.1 239.0  
PITTSBURGH DEP CON  
119.35 285.575 337.4

AKRON  
114.4 ACO  
Chan 91

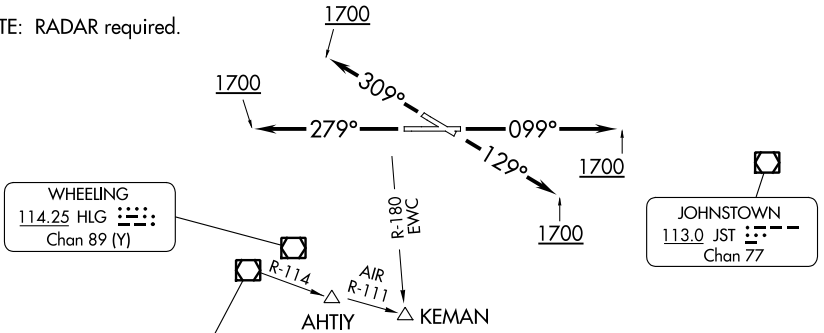
FRANKLIN  
109.6 FKL

BRIGGS  
114.05 BSV  
Chan 87 (Y)

ELLWOOD CITY  
115.8 EWC  
Chan 105

TYROO

NOTE: RADAR required.



WHEELING  
114.25 HLG  
Chan 89 (Y)

JOHNSTOWN  
113.0 JST  
Chan 77

BELLAIRE  
117.1 AIR  
Chan 118

**TAKEOFF MINIMUMS**  
Rwys 10, 28, 31: Standard.  
Rwy 13: Standard with minimum  
climb of 205' per NM to 1800.

PARKERSBURG  
114.45 JPU  
Chan 91(Y)

MORGANTOWN  
111.6 MGW  
Chan 53

ELKINS  
114.2 EKN  
Chan 89

**DEPARTURE ROUTE DESCRIPTION**

TAKEOFF RUNWAY 10: Climb heading 099° until 1700 thence....  
TAKEOFF RUNWAY 13: Climb heading 129° until 1700 thence....  
TAKEOFF RUNWAY 28: Climb heading 279° until 1700 thence....  
TAKEOFF RUNWAY 31: Climb heading 309° until 1700 thence....

....expect vectors to assigned route/fix. Maintain 3000. Expect further clearance to requested altitude 10 minutes after departure.

NOTE: Chart not to scale.

# ALLEGHENY NINE DEPARTURE

NE-4, 16 MAY 2024 to 13 JUN 2024

NE-4, 16 MAY 2024 to 13 JUN 2024