

(LUCYL6.LUCYL) 24109

AL-347 (FAA)

RICHMOND INTL (RIC)
RICHMOND, VIRGINIA

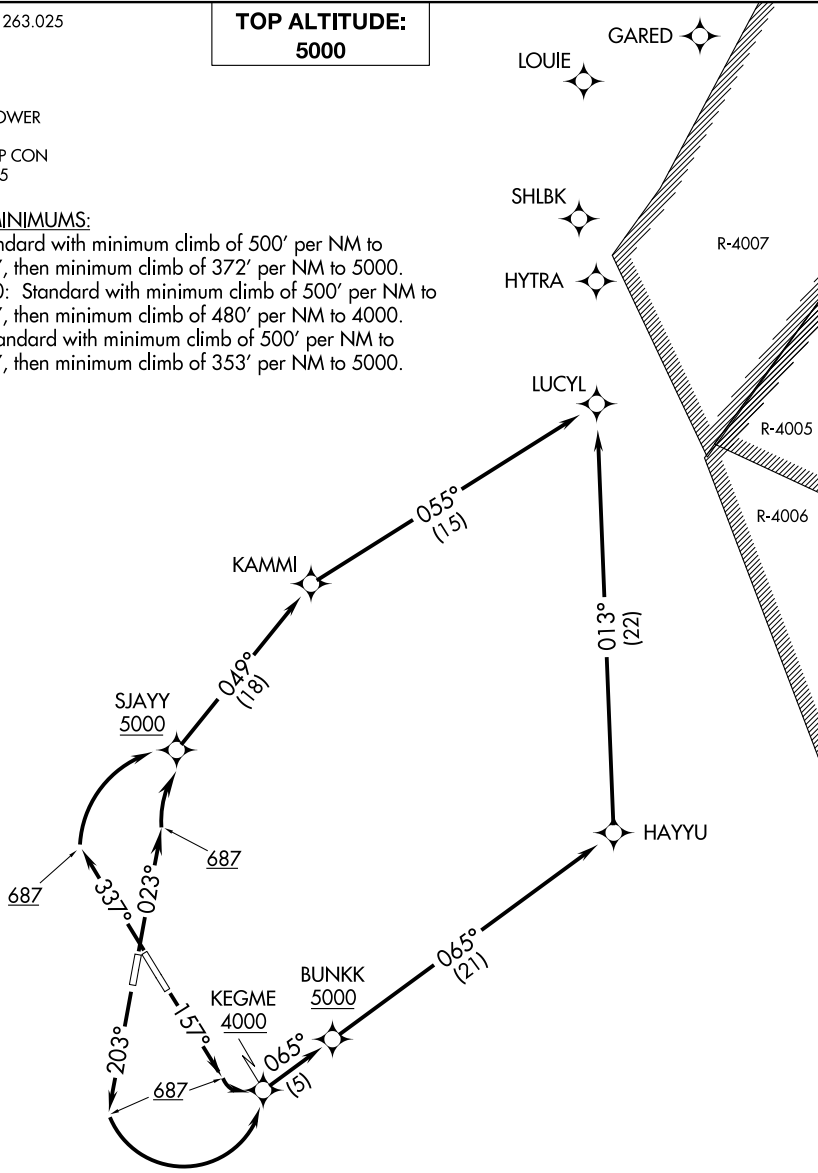
LUCYL SIX DEPARTURE (RNAV)

ATIS 119.15 263.025
CLNC DEL
127.55 348.6
GND CON
121.9 348.6
RICHMOND TOWER
121.1 257.8
POTOMAC DEP CON
126.4 282.375

**TOP ALTITUDE:
5000**

TAKEOFF MINIMUMS:

Rwy 2: Standard with minimum climb of 500' per NM to 687, then minimum climb of 372' per NM to 5000.
Rwys 16, 20: Standard with minimum climb of 500' per NM to 687, then minimum climb of 480' per NM to 4000.
Rwy 34: Standard with minimum climb of 500' per NM to 687, then minimum climb of 353' per NM to 5000.



NOTE: RNAV 1.
NOTE: DME/DME/IRU or GPS required.
NOTE: RADAR required for non-GPS equipped aircraft.

(NARRATIVE ON FOLLOWING PAGE)

NOTE: Chart not to scale.

NE-3, 16 MAY 2024 to 13 JUN 2024

NE-3, 16 MAY 2024 to 13 JUN 2024

LUCYL SIX DEPARTURE (RNAV)

(LUCYL6.LUCYL) 05DEC19

RICHMOND, VIRGINIA
RICHMOND INTL (RIC)