

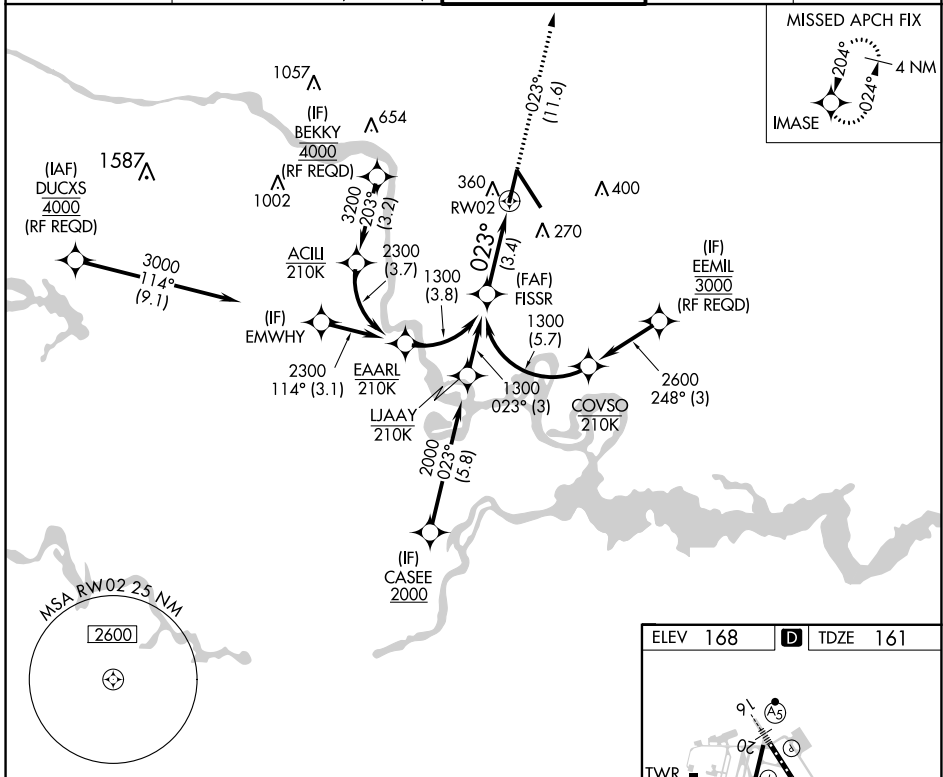
APP CRS	Rwy Idg	6607
023°	TDZE	161
	Apt Elev	168

RNAV (RNP) Y RWY 2

RICHMOND INTL (RIC)

RNP AR APCH.	MALSR	MISSED APPROACH: Climb to 2100 on track 023° to IMASE and hold.
<p>▼ For uncompensated Baro-VNAV systems, procedure NA below -11°C (13°F) or above 54°C (130°F). Rwy 2 helicopter visibility reduction below 3/4 SM NA. For inop ALS, increase RNP 0.11 all Cats visibility to 1 SM and RNP 0.3 all Cats visibility to 1 1/4 SM.</p>		

ATIS	POTOMAC APP CON	RICHMOND TOWER	GND CON	CLNC DEL
119.15 263.025	126.4 282.375 (001°-185°) 126.75 307.2 (186°-360°)	121.1 257.8	121.9 348.6	127.55 348.6



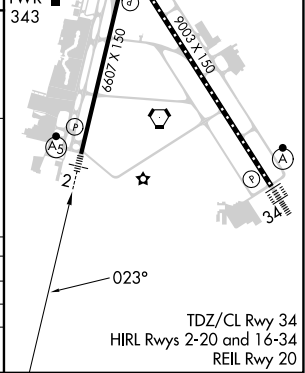
NE-3, 16 MAY 2024 to 13 JUN 2024

NE-3, 16 MAY 2024 to 13 JUN 2024

See planview for multiple IF locations.

FISSR	1300	2100	IMASE
1300	023°	↑	
GP 3.00°		tr 023°	
TCH 50			
	3.4 NM		
CATEGORY	A	B	C
RNP 0.11 DA		506-3/4	345 (400-3/4)
RNP 0.30 DA		595-1	434 (500-1)

AUTHORIZATION REQUIRED



TDZ/CL Rwy 34
HIRL Rwys 2-20 and 16-34
REIL Rwy 20