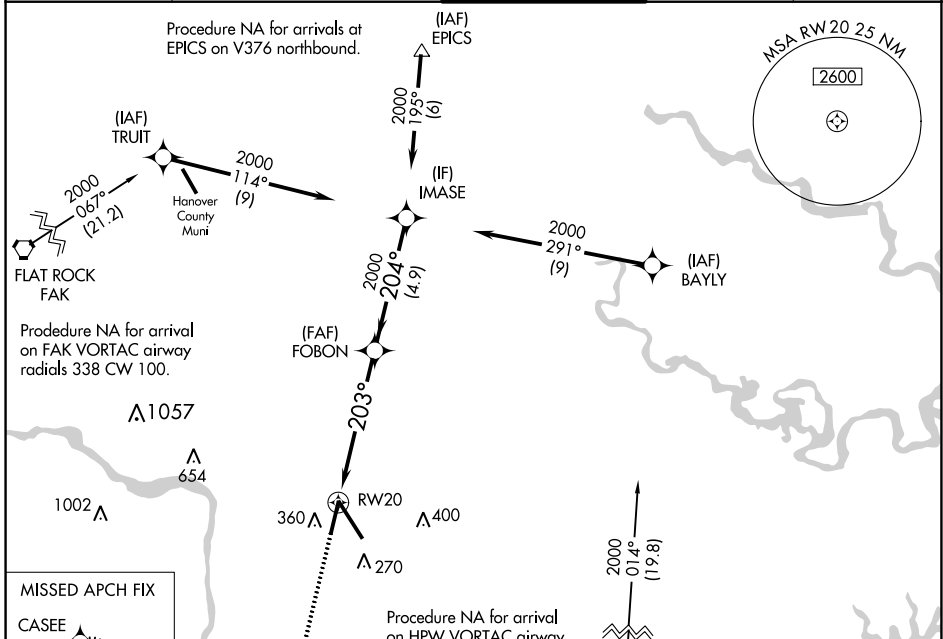


WAAS CH 69320 W20A	APP CRS 203°	Rwy Idg 6607 TDZE 168 Apt Elev 168
--	------------------------	---

RNAV (GPS) Z RWY 20

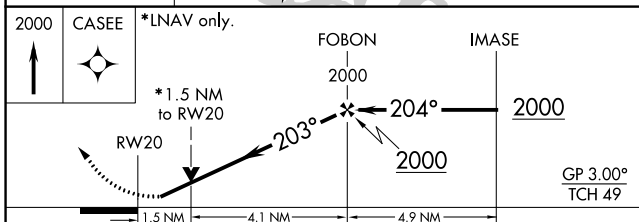
RICHMOND INTL (RIC)

RNP APCH.		POTOMAC APP CON 126.4 282.375 (001°-185°) 126.75 307.2 (186°-360°)		RICHMOND TOWER 121.1 257.8		GND CON 121.9 348.6		CLNC DEL 127.55 348.6	
<p>▼ For uncompensated Baro-VNAV systems, LNAV/VNAV NA below -11°C (13°F) or above 54°C (130°F). Rwy 20 helicopter visibility reduction below ¾ SM NA.</p>								<p>MISSED APPROACH: Climb to 2000 direct CASEE and hold.</p>	

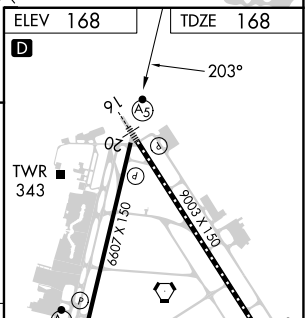


NE-3, 16 MAY 2024 to 13 JUN 2024

NE-3, 16 MAY 2024 to 13 JUN 2024



CATEGORY	A	B	C	D
LPV DA		464- ⁷ / ₈	296 (300- ⁷ / ₈)	
LNAV/VNAV DA		603-1 ¹ / ₂	435 (500-1 ¹ / ₂)	
LNAV MDA	680-1	512 (600-1)	680-1 ³ / ₈	512 (600-1 ³ / ₈)
C CIRCLING	680-1	512 (600-1)	700-1 ¹ / ₂ 532 (600-1 ¹ / ₂)	720-2 552 (600-2)



TDZ/CL Rwy 34	
HIRL Rwy 2-20 and 16-34	
REIL Rwy 20	