

VORTAC RIC 114.1 Chan 88	APP CRS 323°	Rwy Idg 9003 TDZE 161 Apt Elev 167
--	------------------------	---

VOR RWY 34

RICHMOND INTL (RIC)

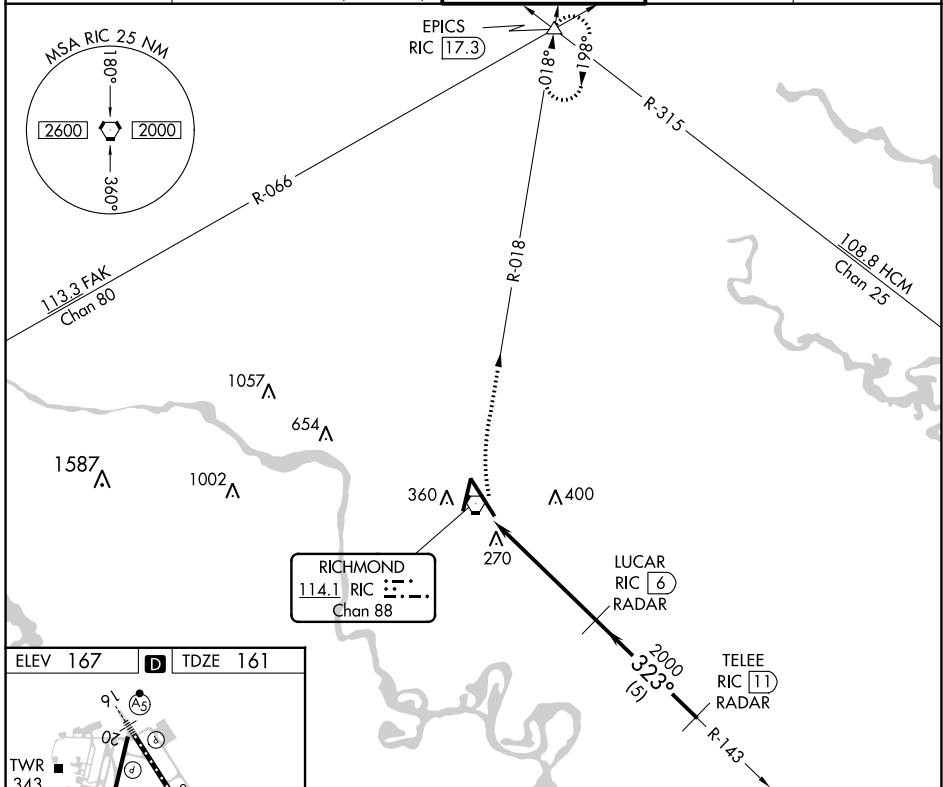
DME or RADAR required. RADAR required for procedure entry.

ALSF-2

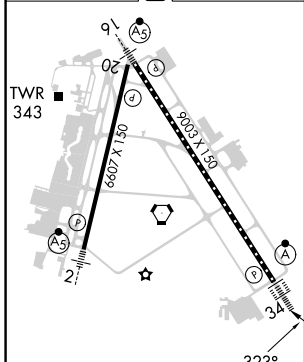
MISSED APPROACH: Climbing right turn to 2000 via RIC R-018 to EPICS INT and hold.

For inop ALS, increase S-34 Cat C/D visibility to RVR 5500.

ATIS 119.15 263.025	POTOMAC APP CON 126.4 282.375 (001°-185°) 126.75 307.2 (186°-360°)	RICHMOND TOWER 121.1 257.8	GND CON 121.9 348.6	CLNC DEL 127.55 348.6
-------------------------------	--	--------------------------------------	-------------------------------	---------------------------------



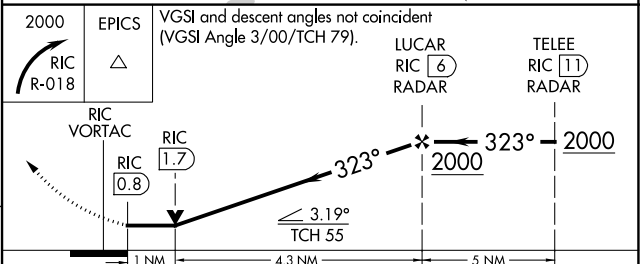
ELEV 167	D	TDZE 161
----------	---	----------



TDZ/CL Rwy 34
HIRL Rws 2-20 and 16-34
REIL Rwy 20

FAF to MAP 5.3 NM

Knots	60	90	120	150	180
Min:Sec	5:18	3:32	2:39	2:07	1:46



CATEGORY	A	B	C	D
S-34	540/24 379 (400-½)		540/40 379 (400-¾)	540/50 379 (400-1)
<input checked="" type="checkbox"/> CIRCLING	660-1 493 (500-1)		700-1½ 533 (600-1½)	720-2 553 (600-2)

NE-3, 16 MAY 2024 to 13 JUN 2024

NE-3, 16 MAY 2024 to 13 JUN 2024